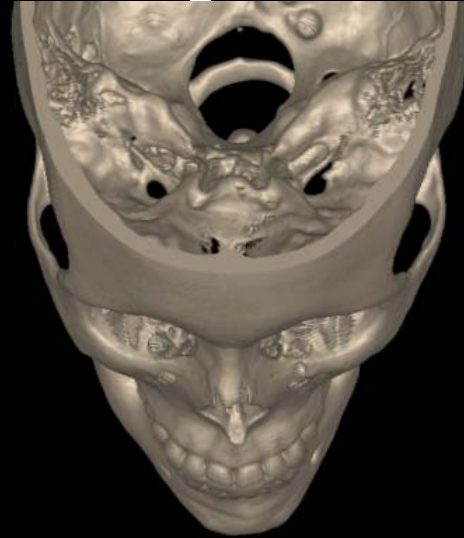
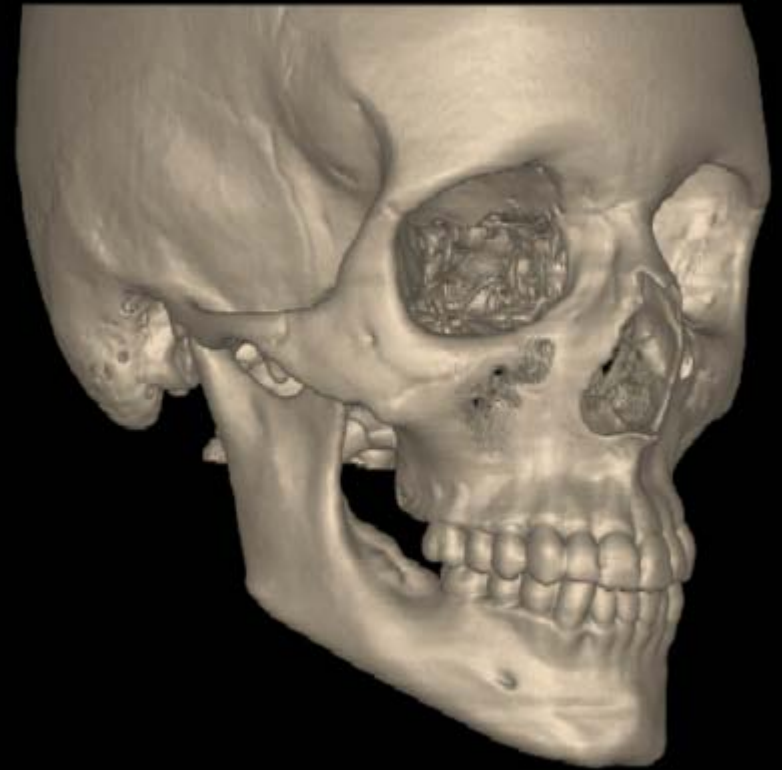


# Skull Series

# Cranial Cavity



# Skull - Frontal and Lateral View 3D



# Skull AP

Sagittal Suture

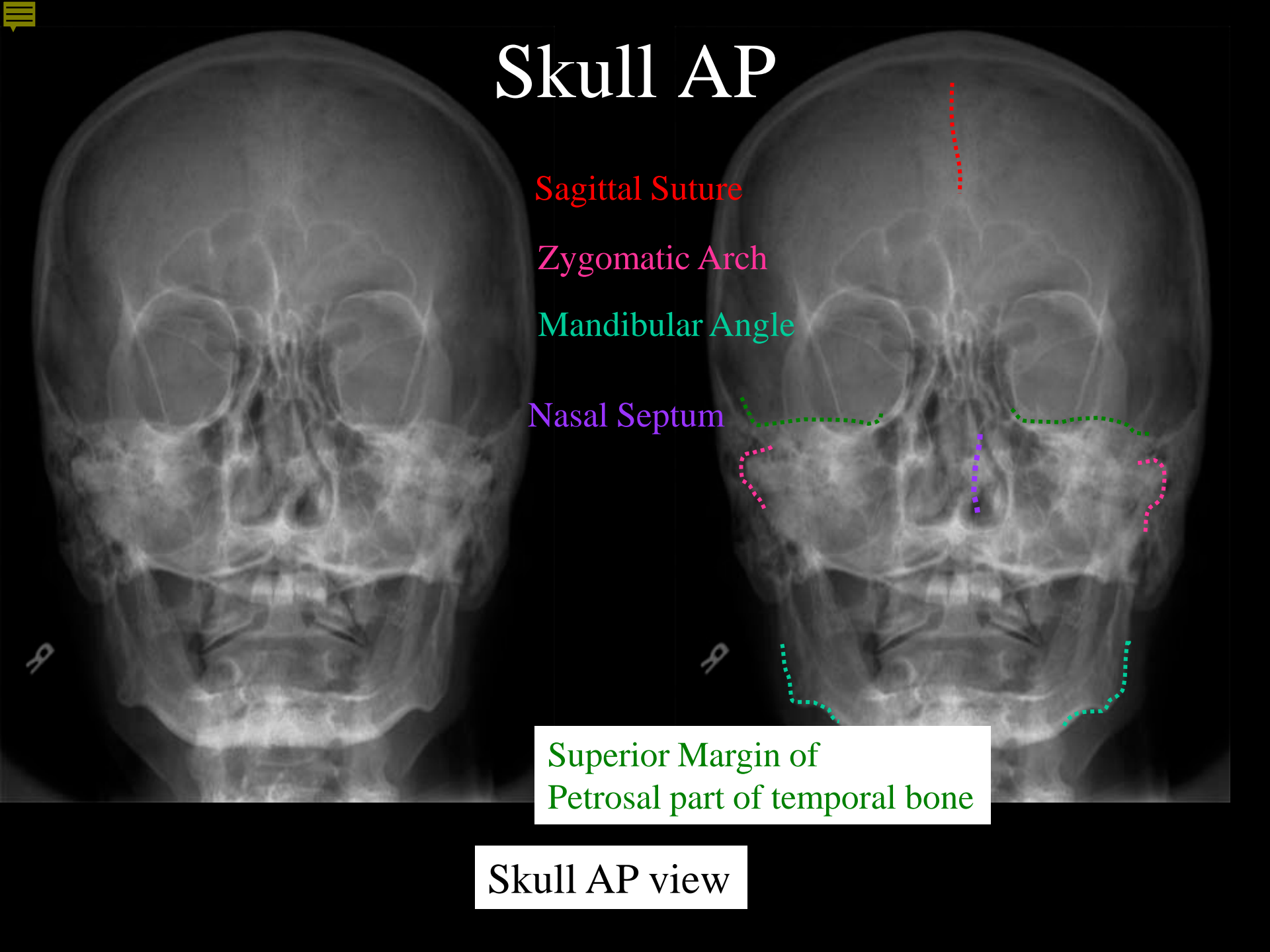
Zygomatic Arch

Mandibular Angle

Nasal Septum

Superior Margin of  
Petrosal part of temporal bone

Skull AP view



# Skull AP with 3D

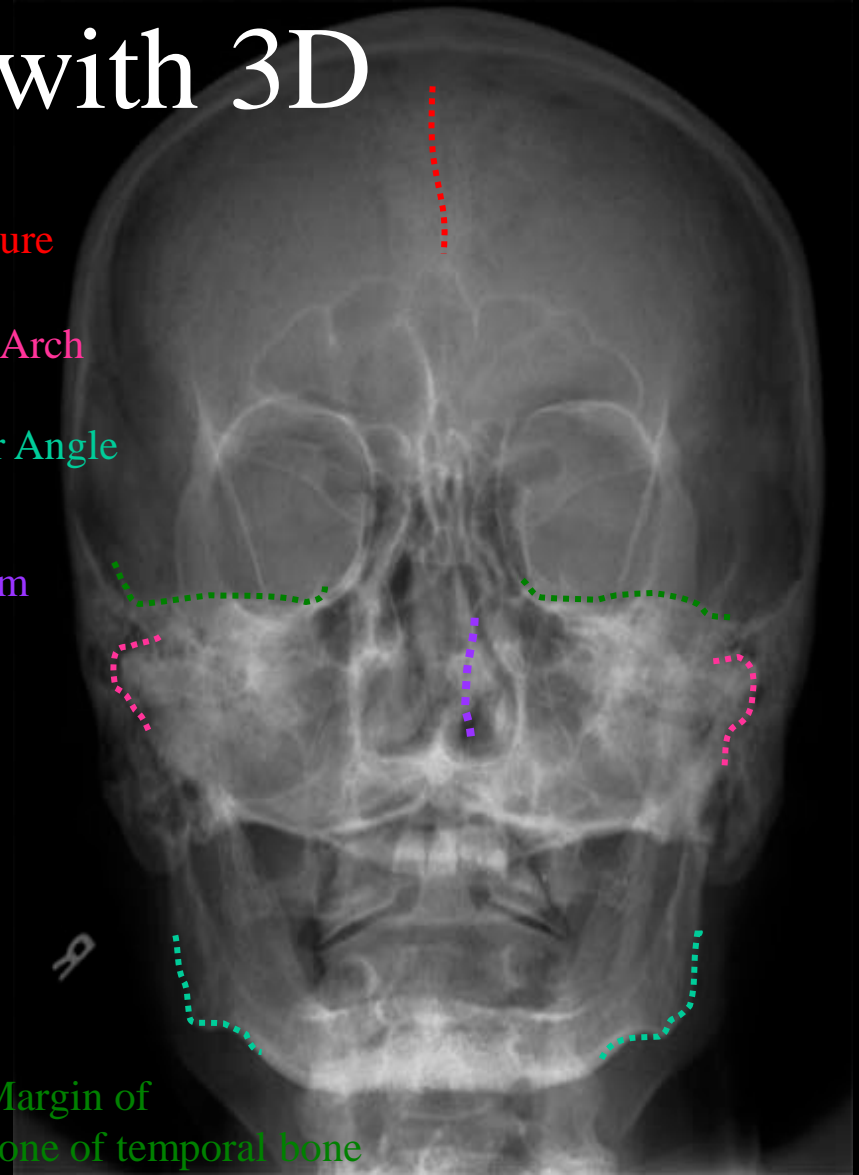


Sagittal Suture

Zygomatic Arch

Mandibular Angle

Nasal Septum



Superior Margin of  
Petrosal Bone of temporal bone



Skull AP view

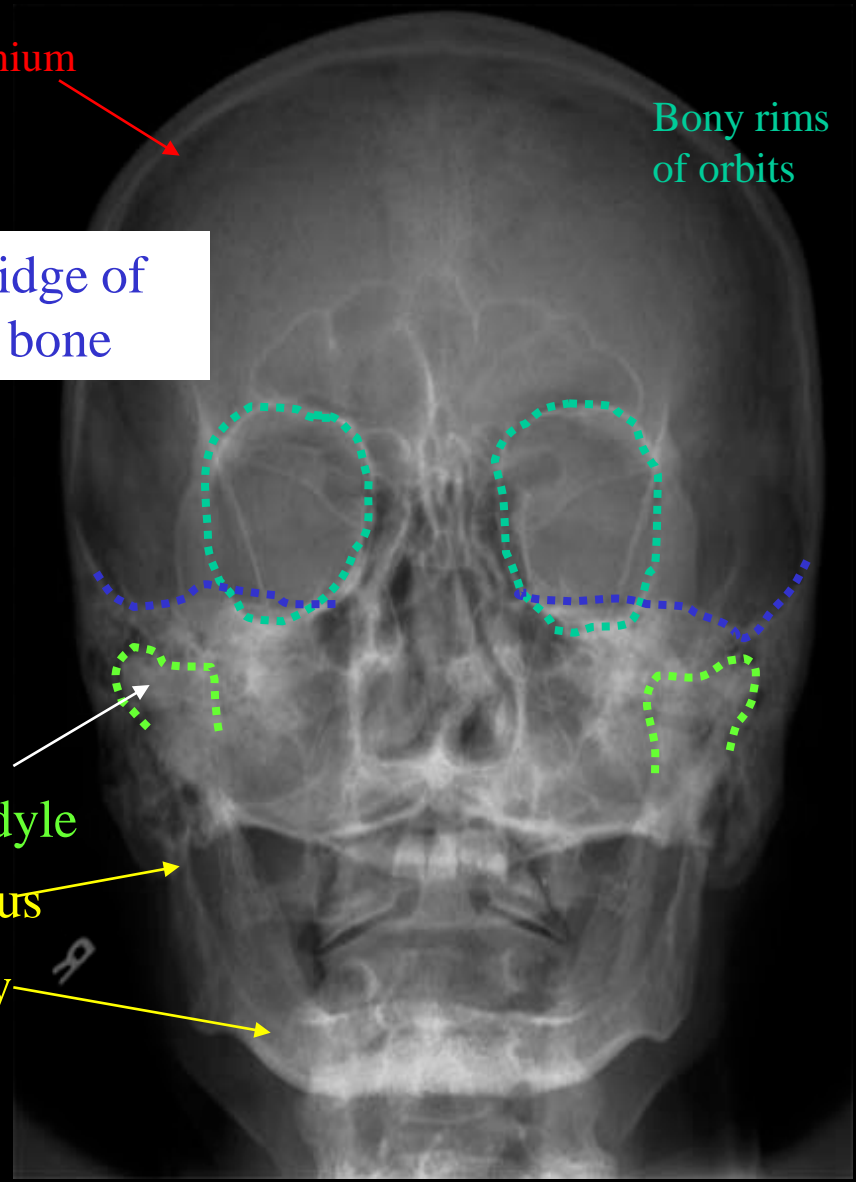
# Skull AP - Mandible



Cranium

Bony rims of orbits

Petrous ridge of temporal bone



Mandible

Condyle

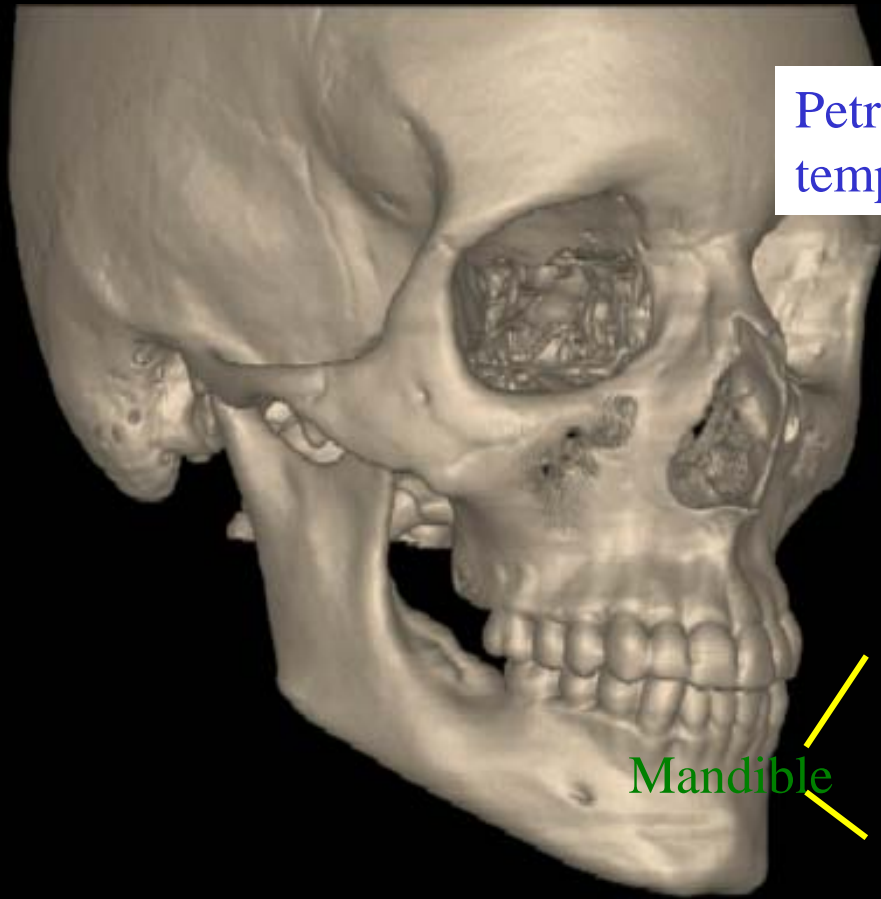
Ramus

Body

Skull AP view



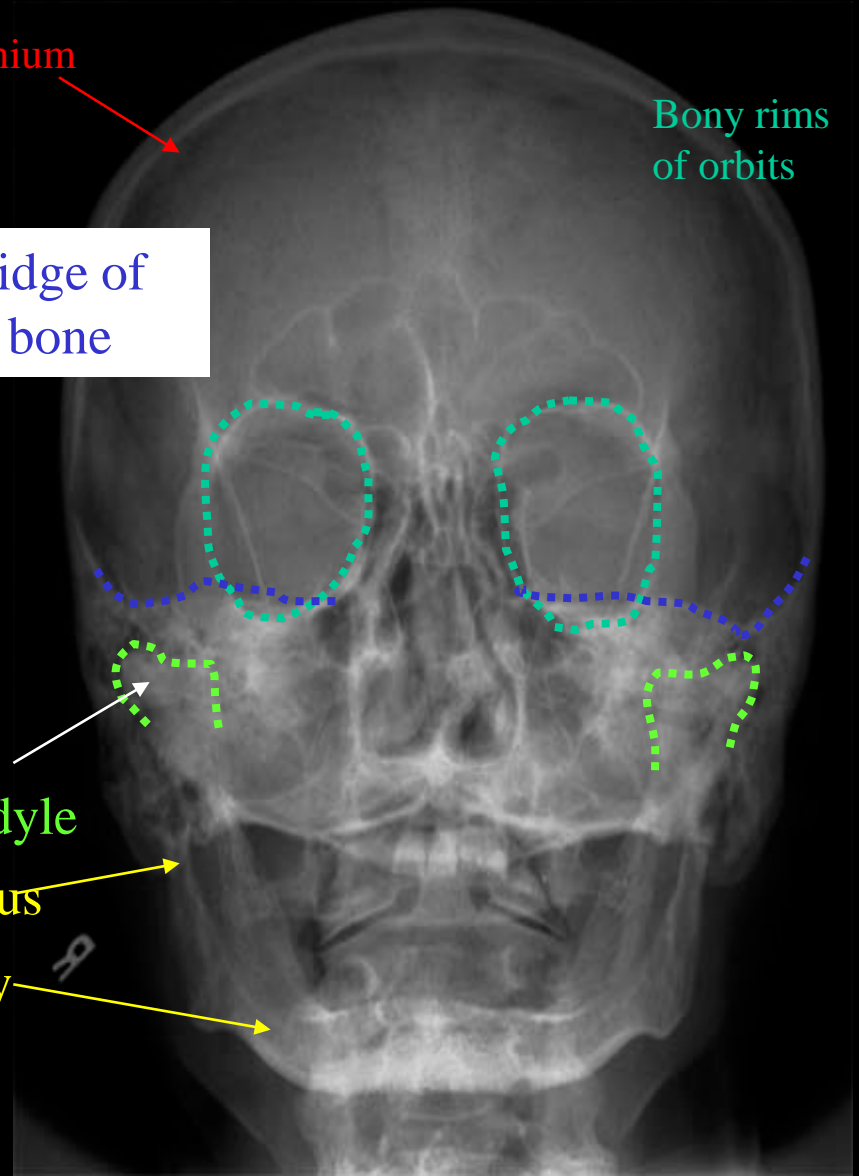
# Skull AP – Mandible 3D



Petrous ridge of  
temporal bone

Cranium

Bony rims  
of orbits

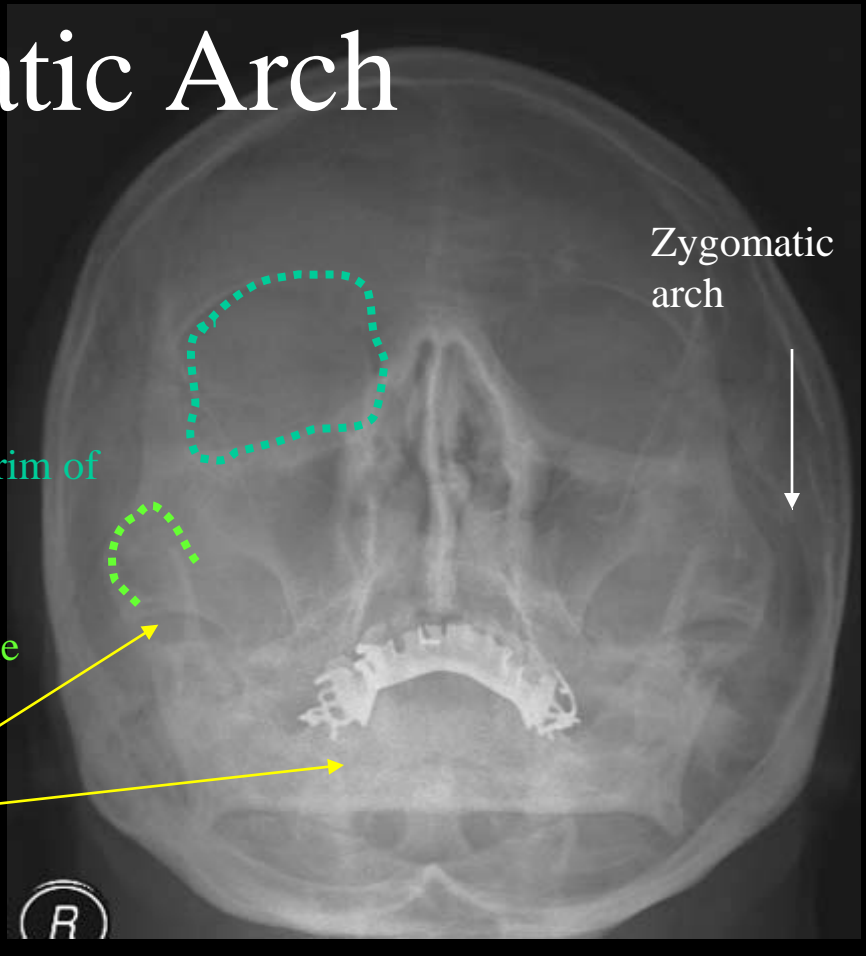


Skull AP view

# Zygomatic Arch



Mandible



Zygomatic arch

Bony rim of orbit

Condyle

Neck

Body

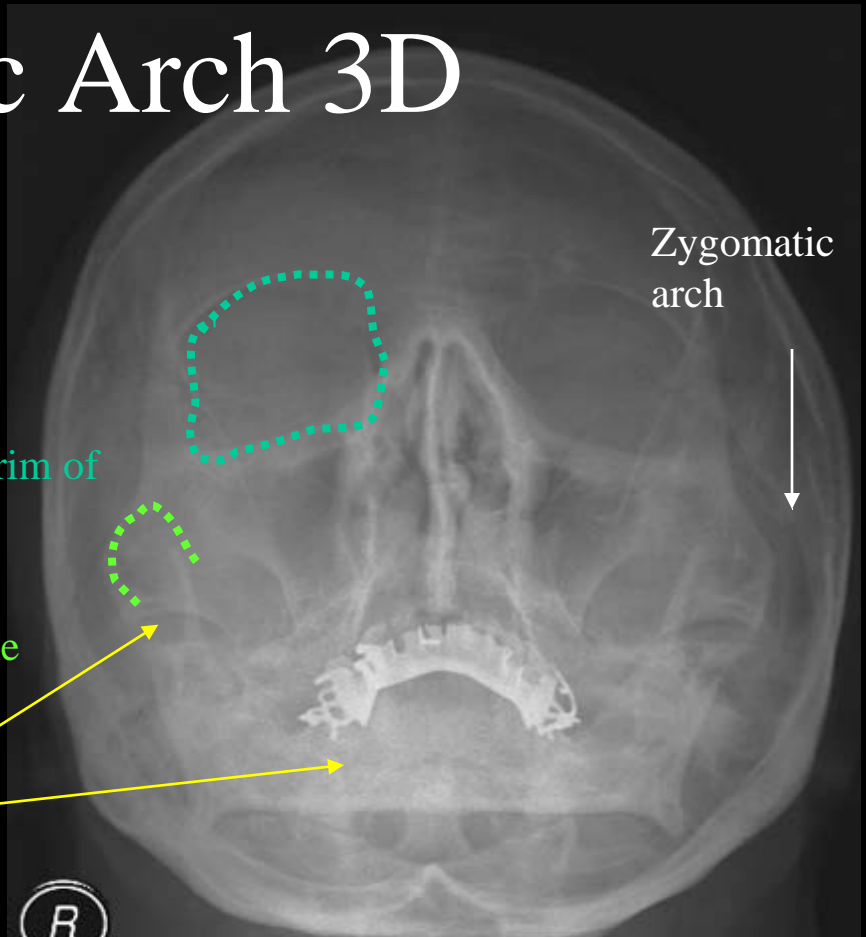
Skull Waters view



# Zygomatic Arch 3D



Mandible



Zygomatic arch

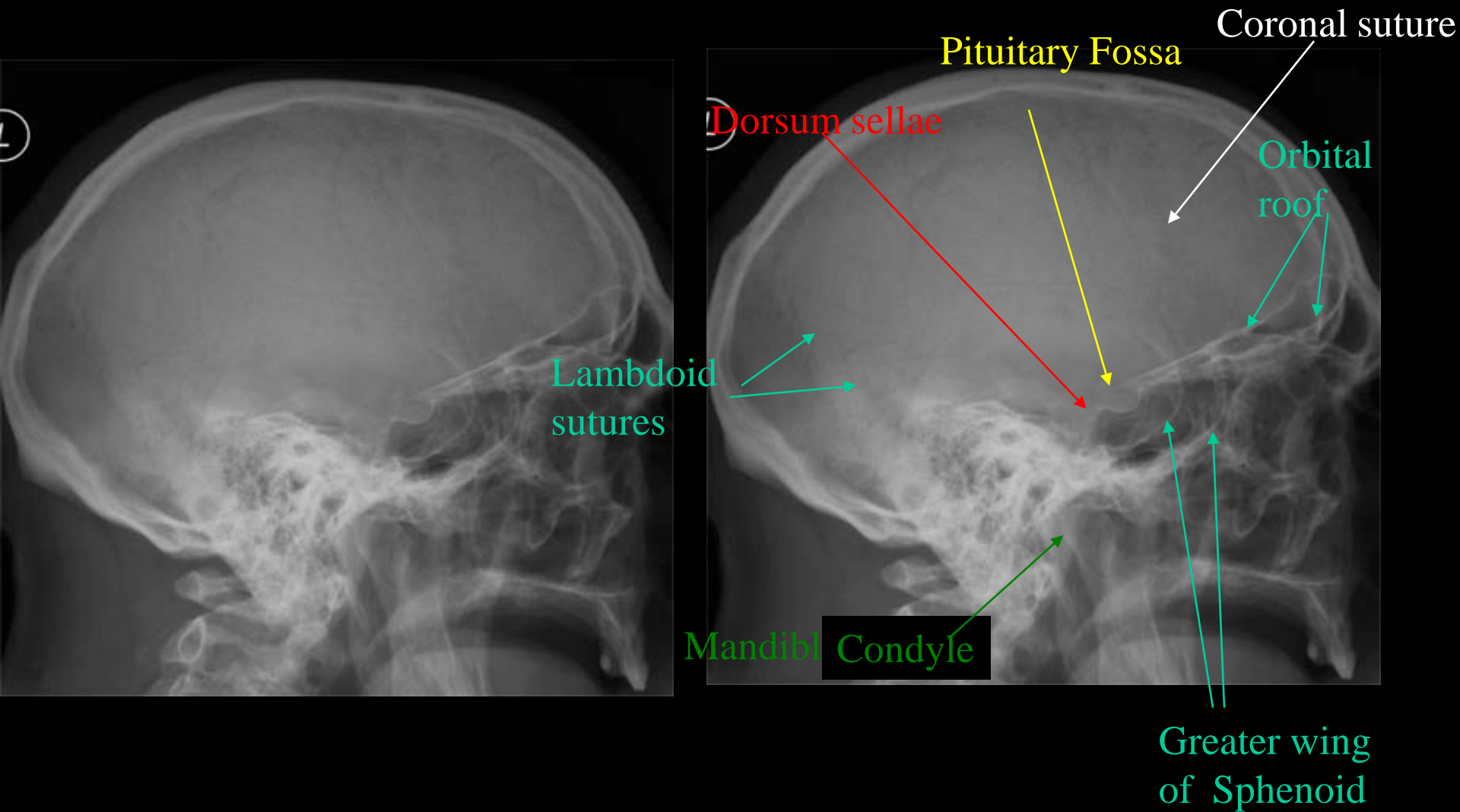
Bony rim of orbit

Condyle

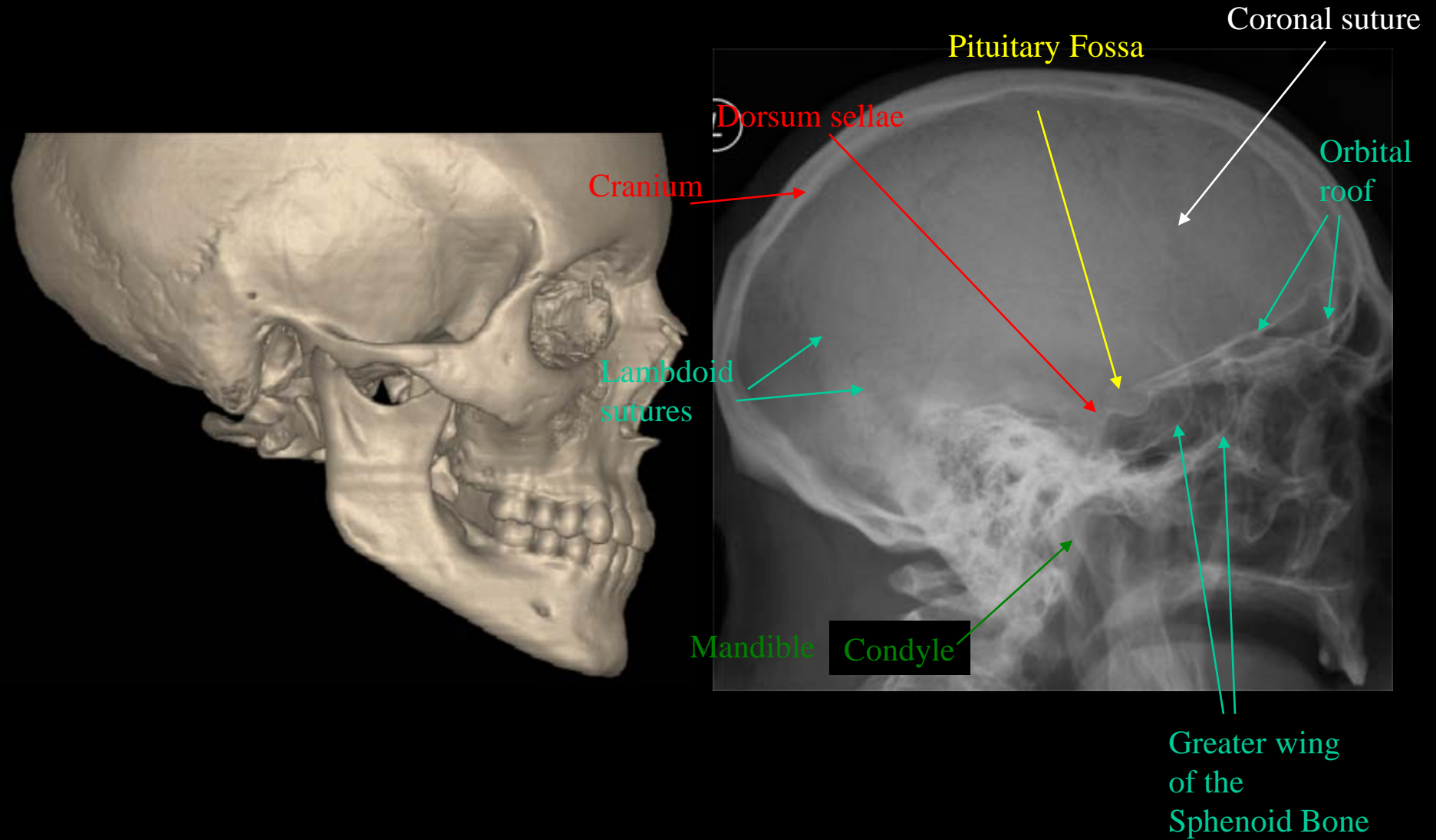
Neck

Body

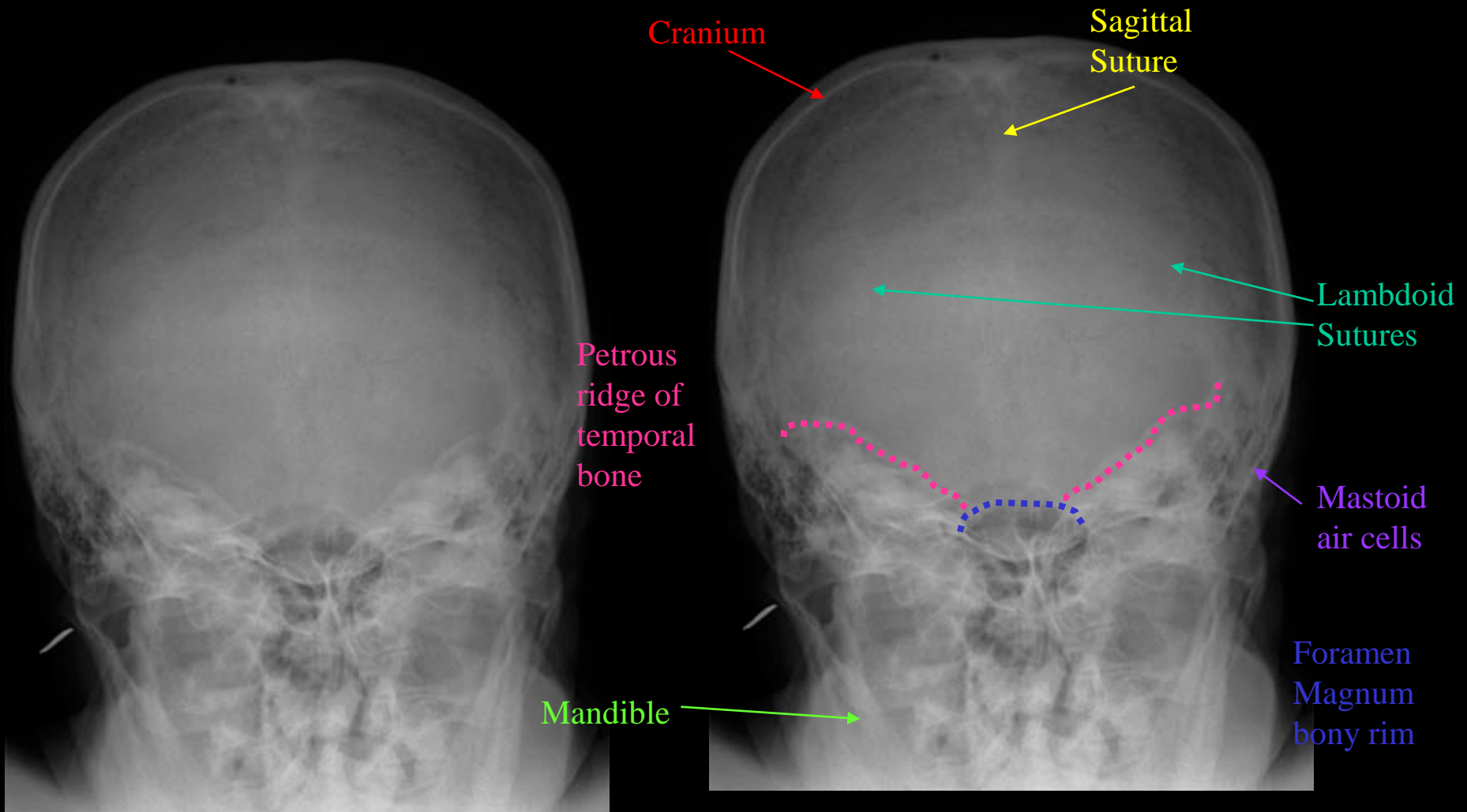
Skull Waters view



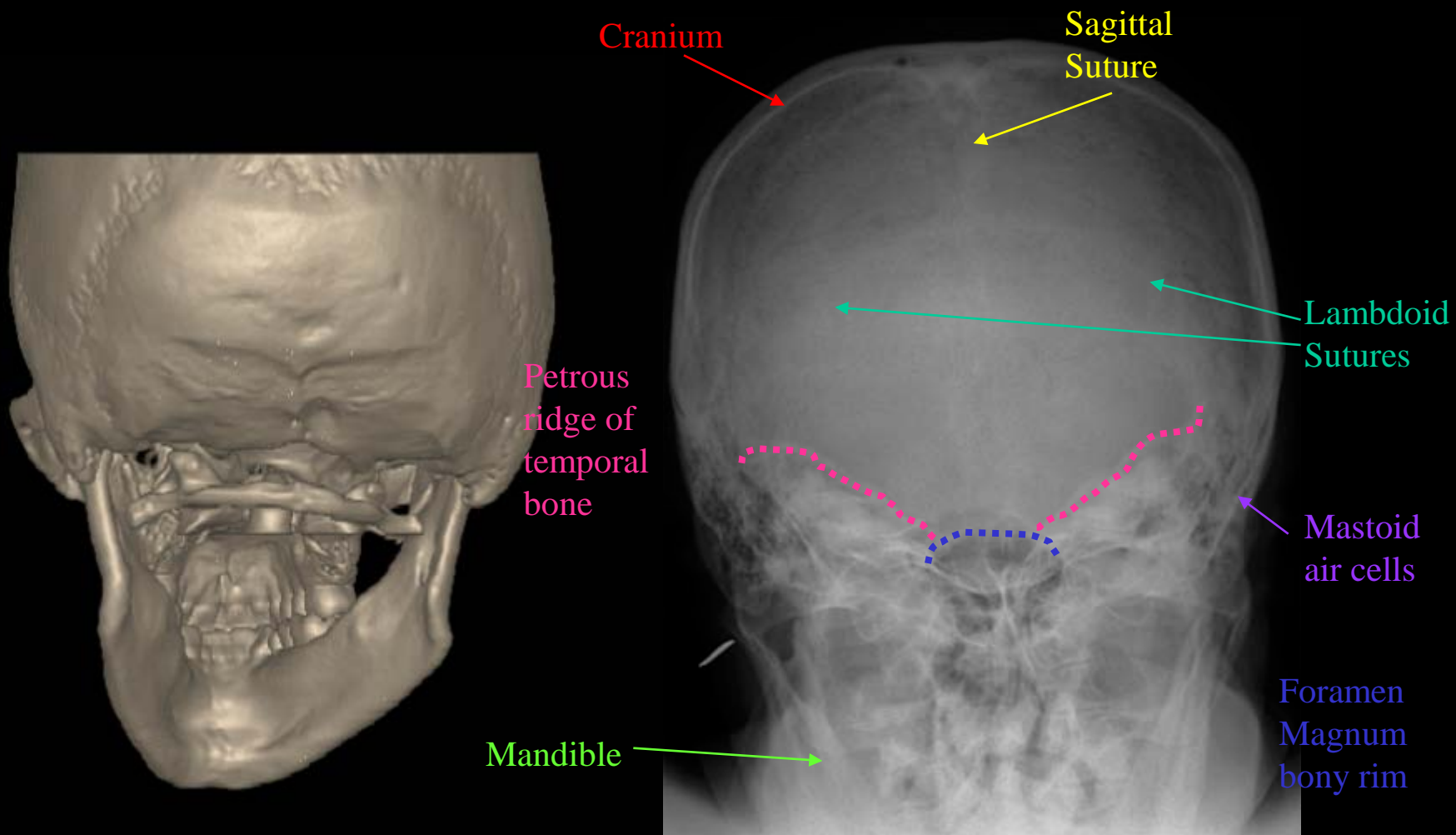
Skull Lateral View



Skull Lateral View 3D



Skull Townes View



Skull Townes View

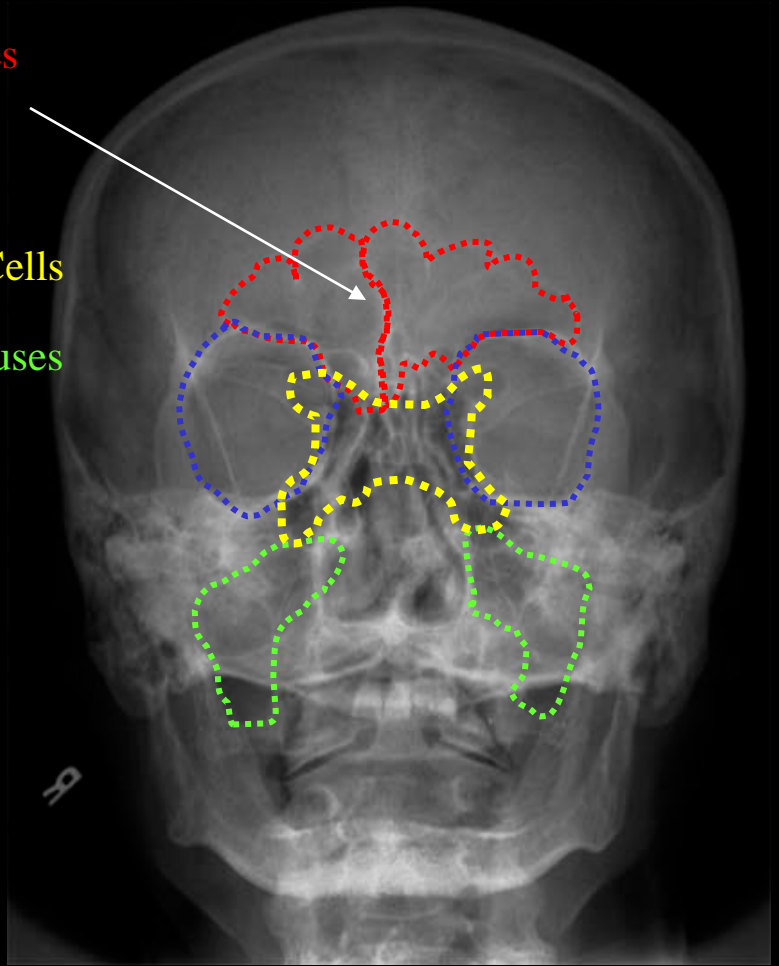


Frontal Sinuses

Orbits

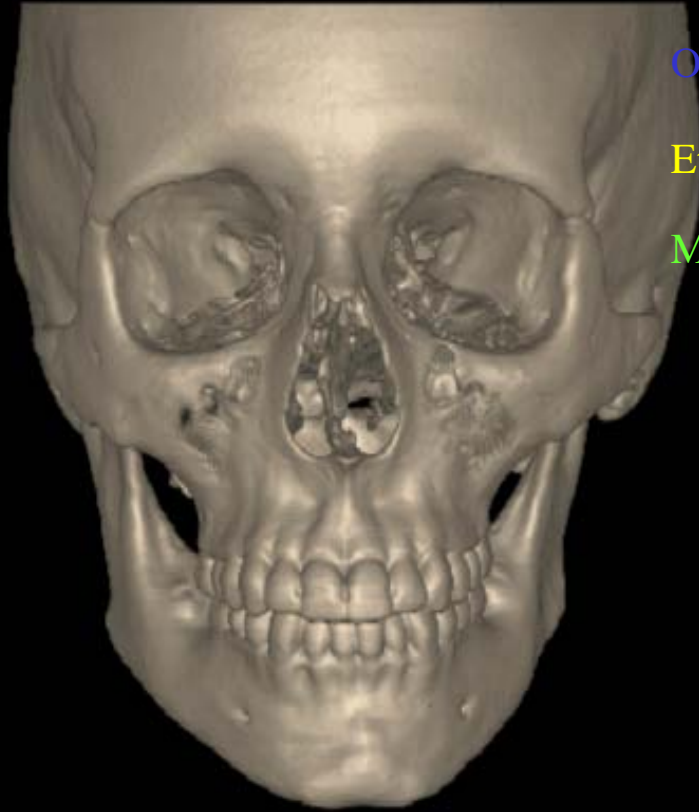
Ethmoid Air Cells

Maxillary Sinuses



Skull AP View (Sinuses)



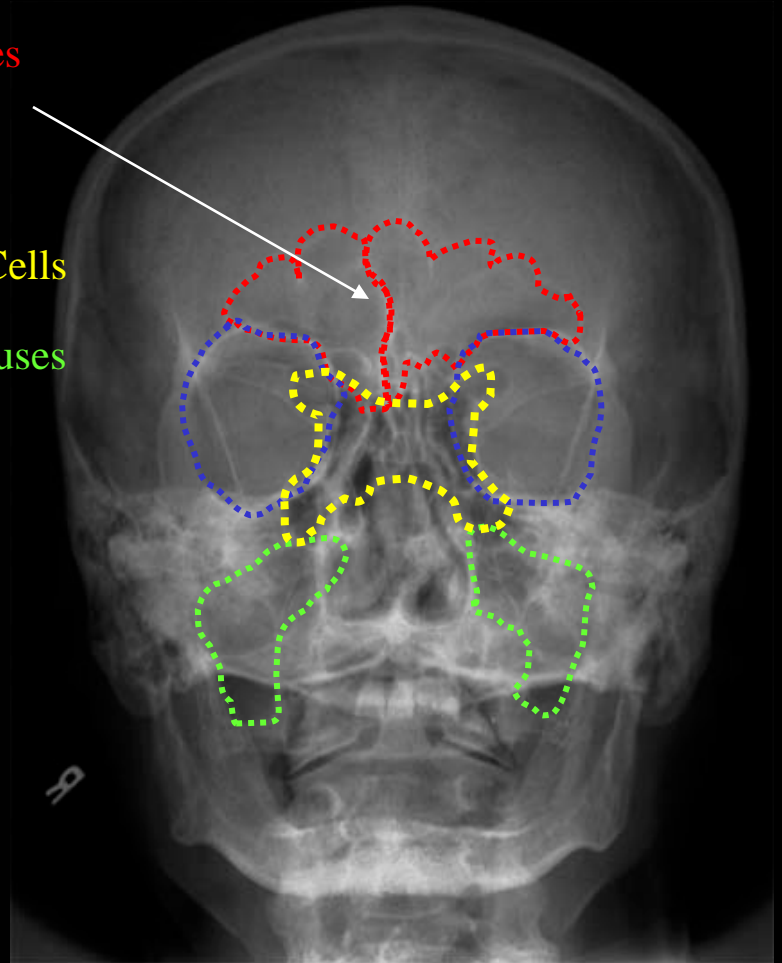


Frontal Sinuses

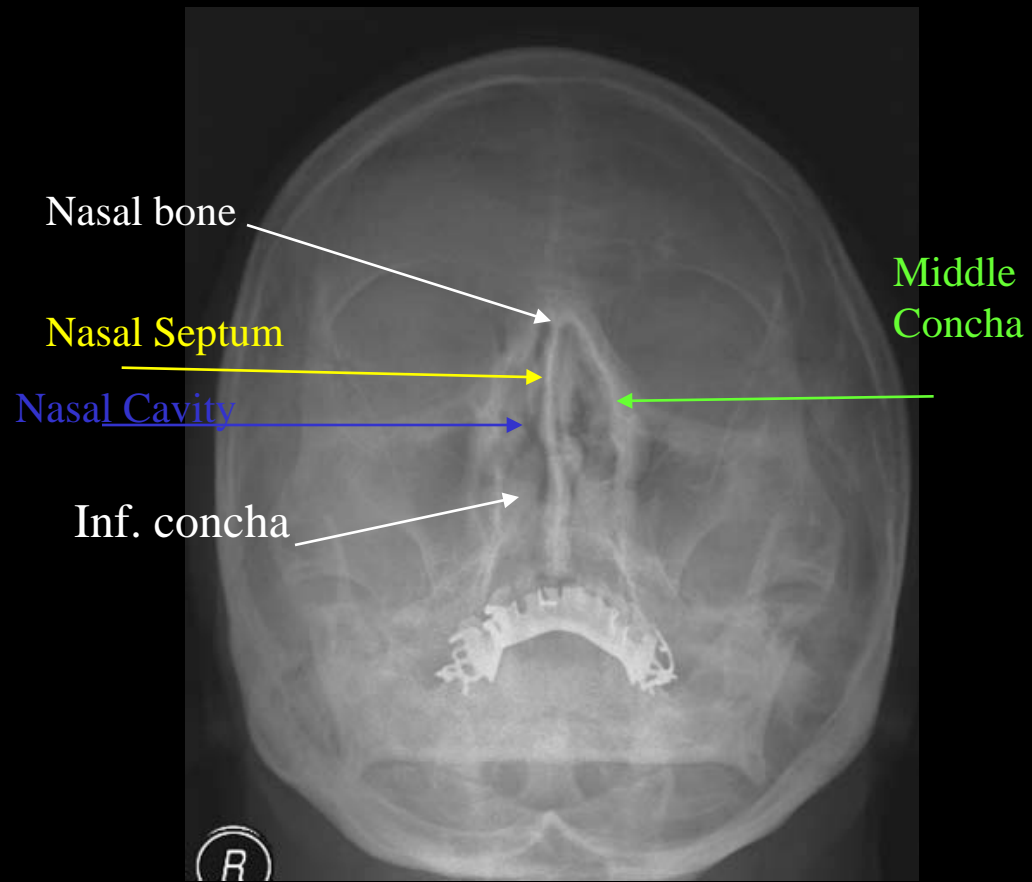
Orbits

Ethmoid Air Cells

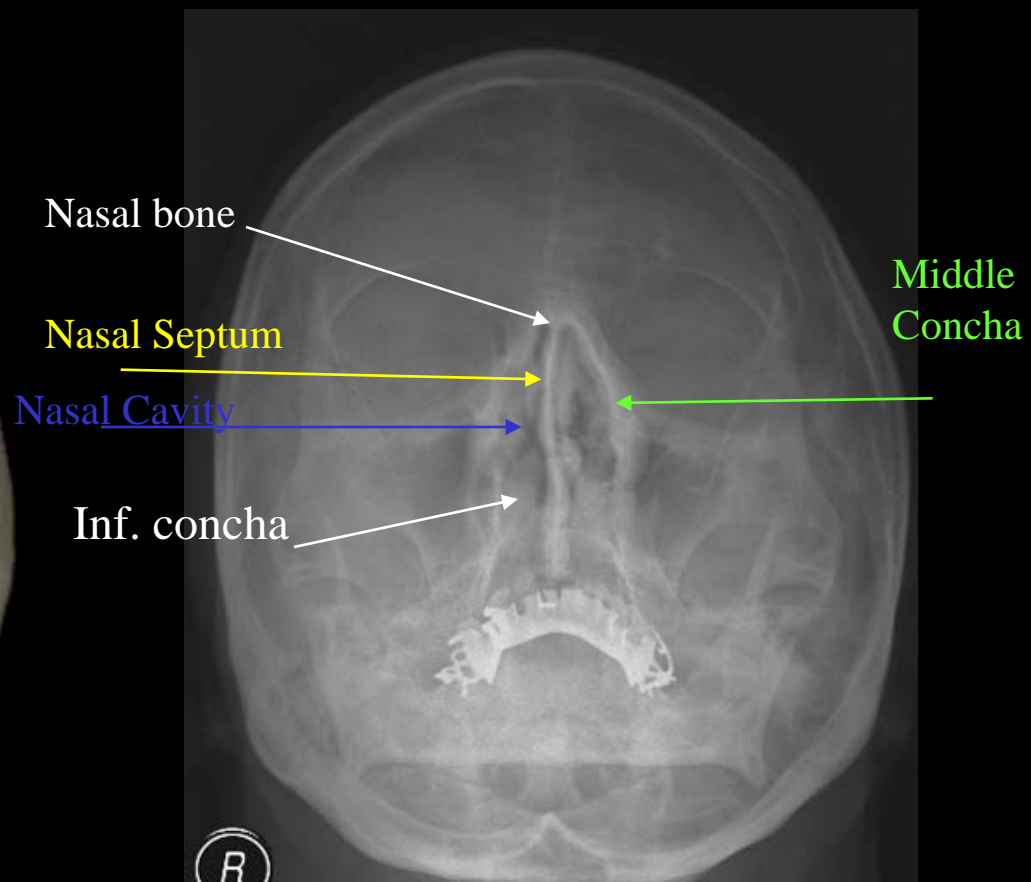
Maxillary Sinuses



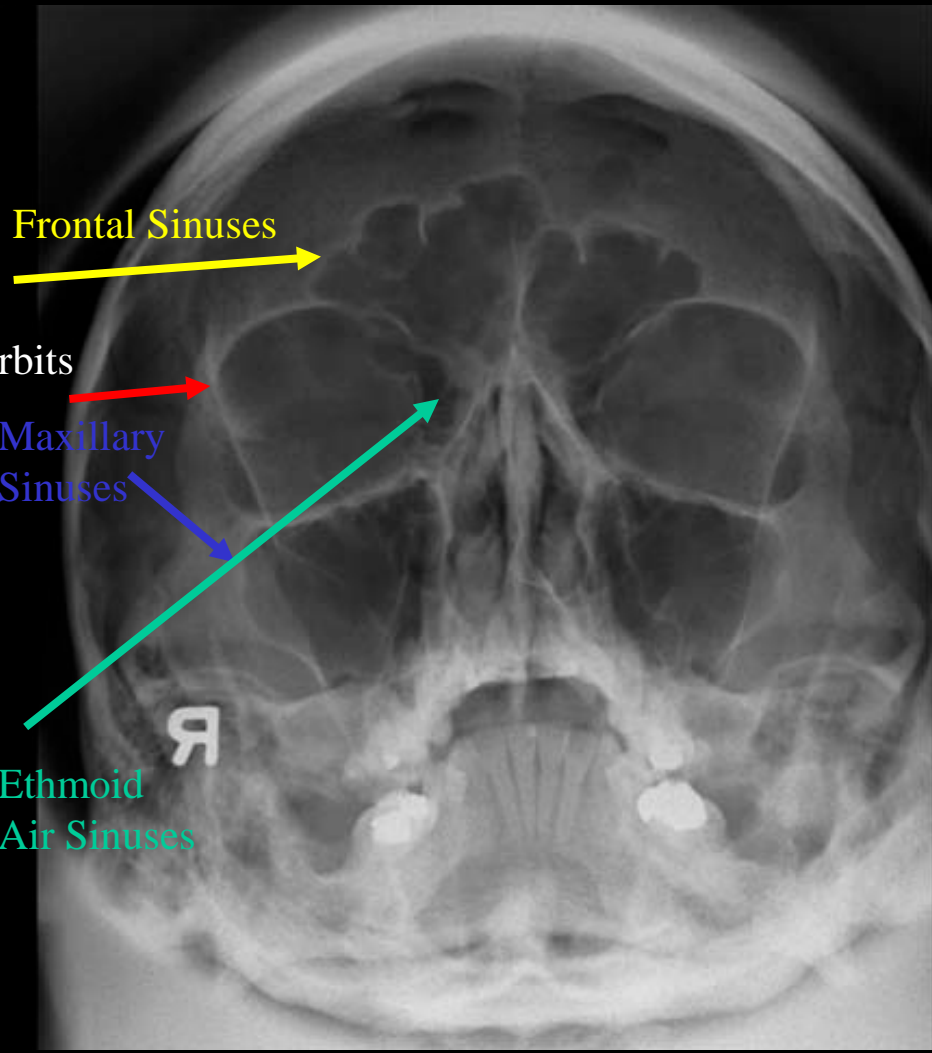
Skull AP View



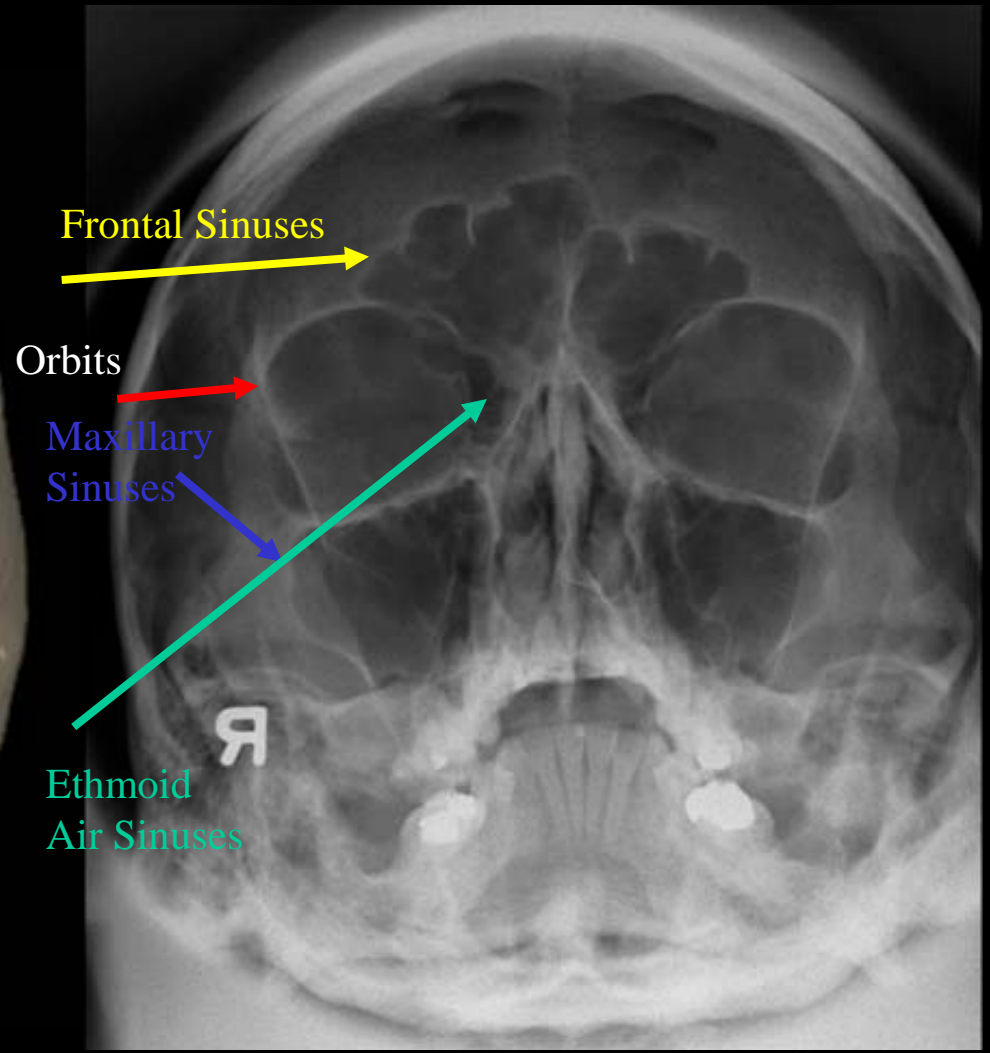
Skull Waters View



Skull Waters View 3D

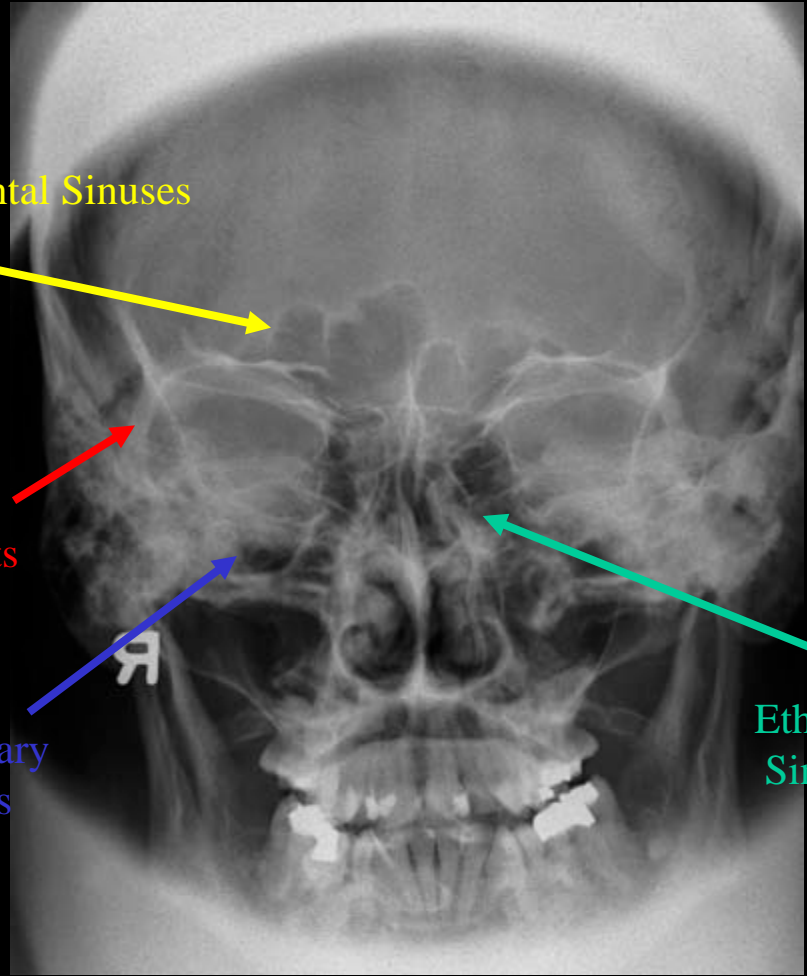


Skull Waters View (Sinuses)



Skull Waters View (Sinuses)





Frontal Sinuses

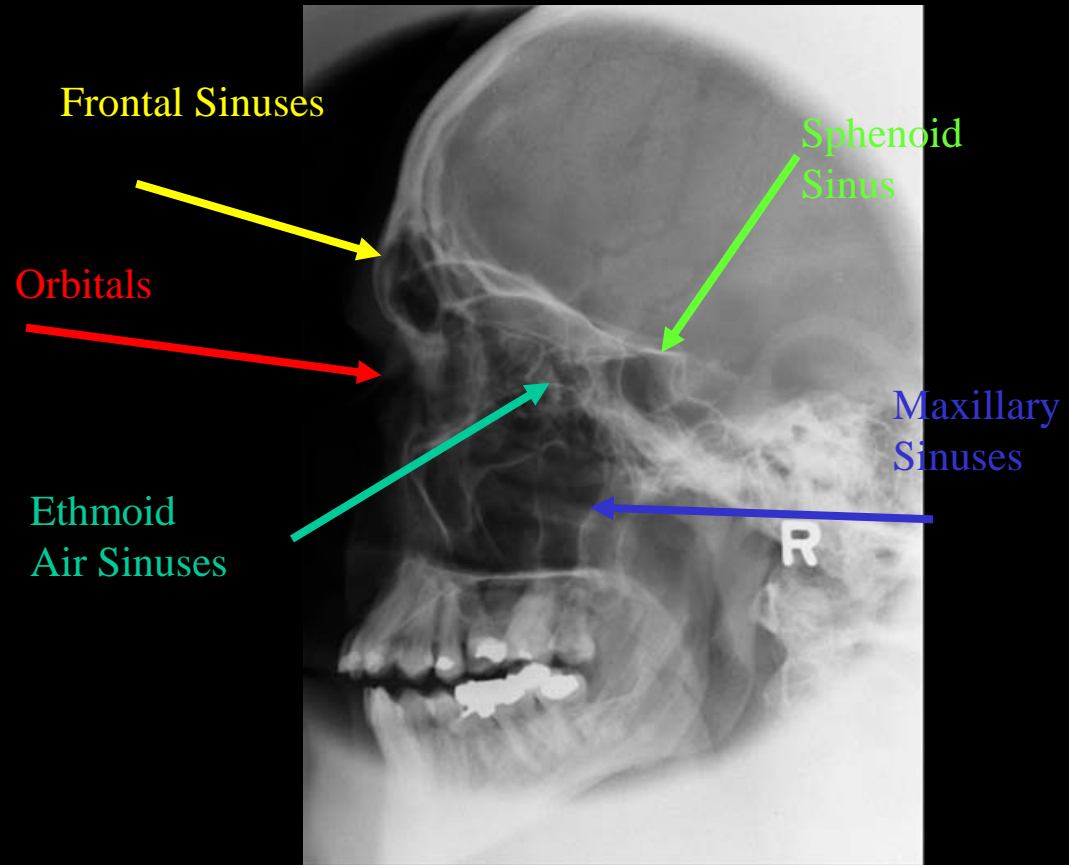
Orbits

Maxillary Sinuses

Ethmoid Air Sinuses

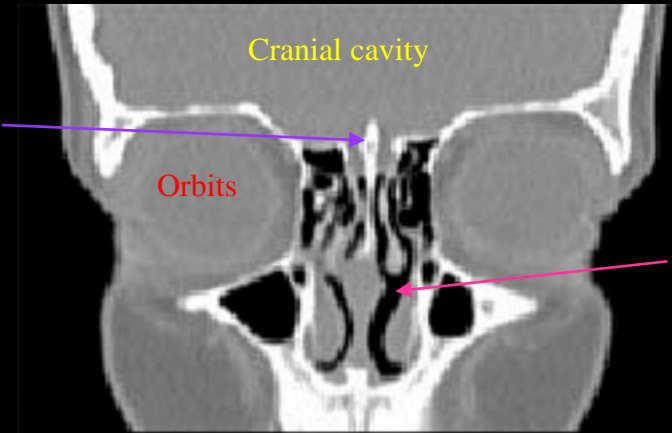
Skull AP View (Sinuses)





Skull Lateral View

# CT Sinuses Coronal

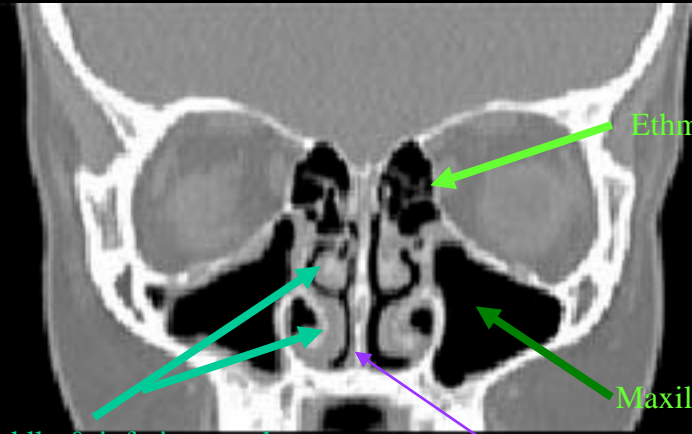
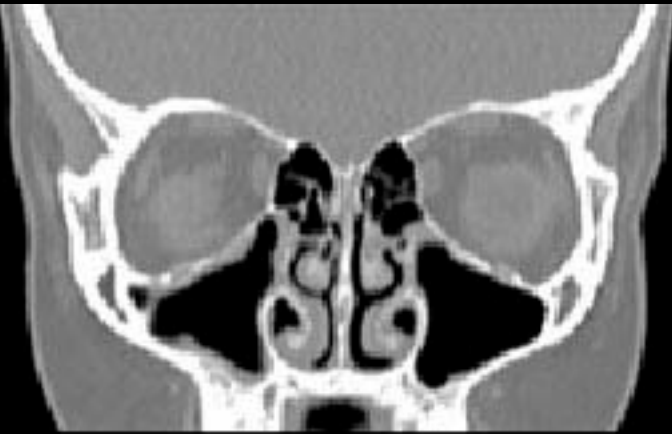


Crista galli

Cranial cavity

Orbits

Nasal cavity



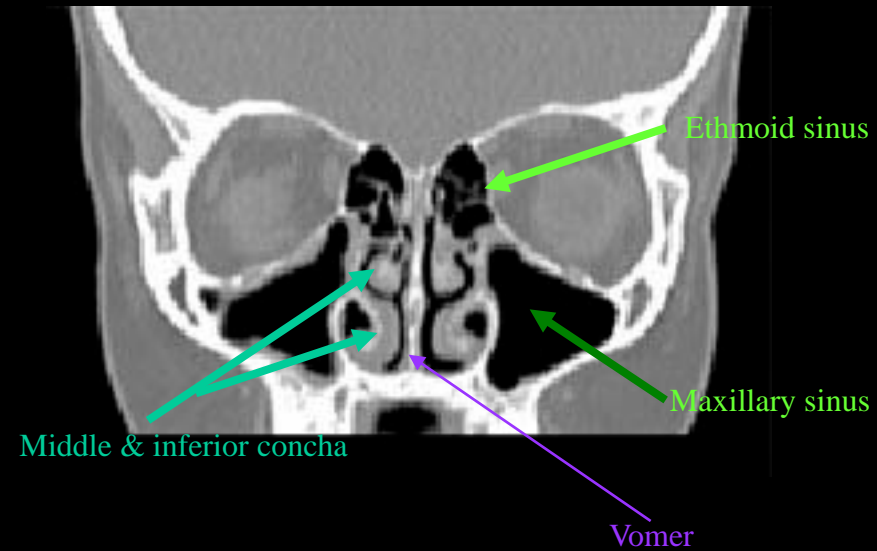
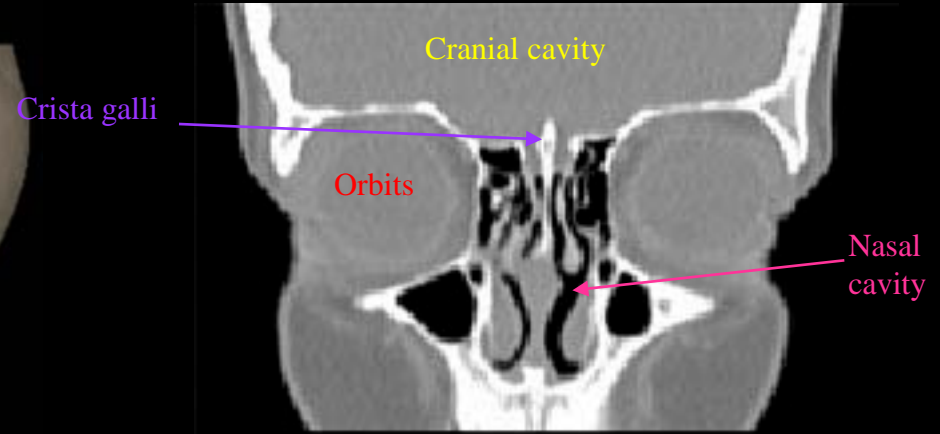
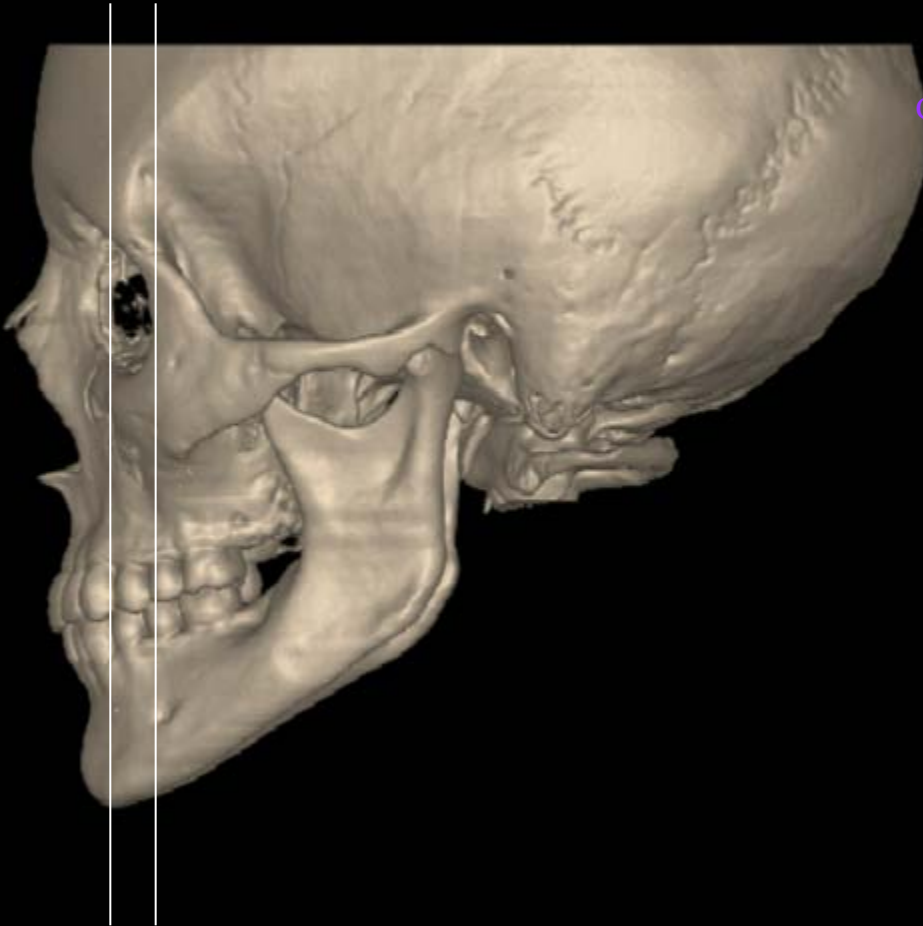
Middle & inferior concha

Ethmoid sinus

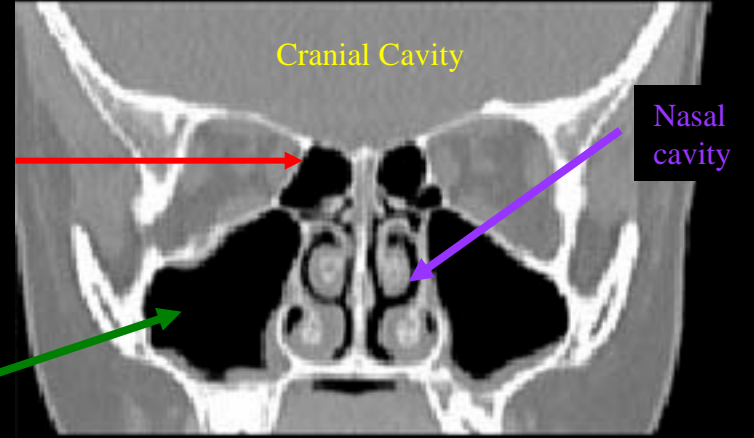
Maxillary sinus

Vomer

# CT Sinuses Coronal 3D



# CT Sinuses Coronal

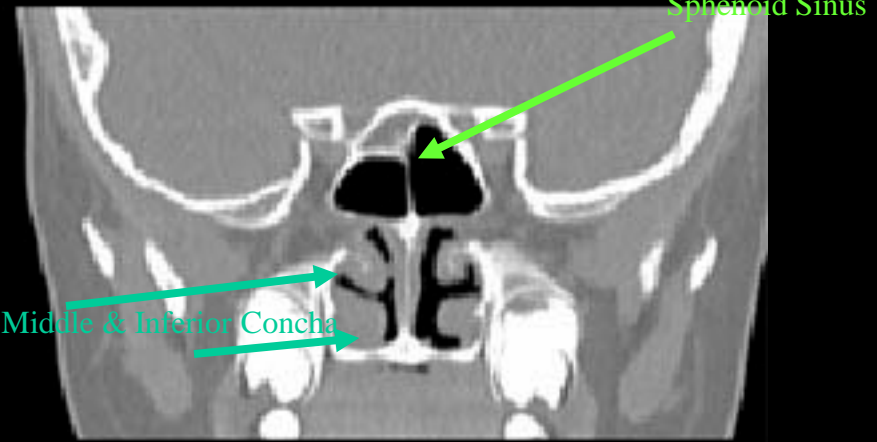
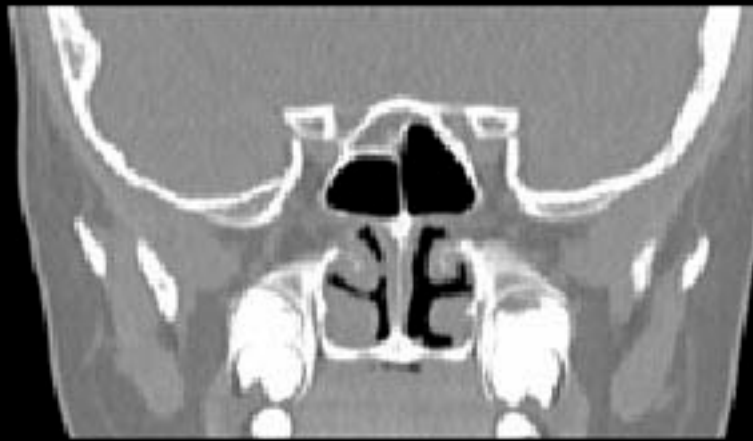


Sphenoid sinus

Cranial Cavity

Nasal cavity

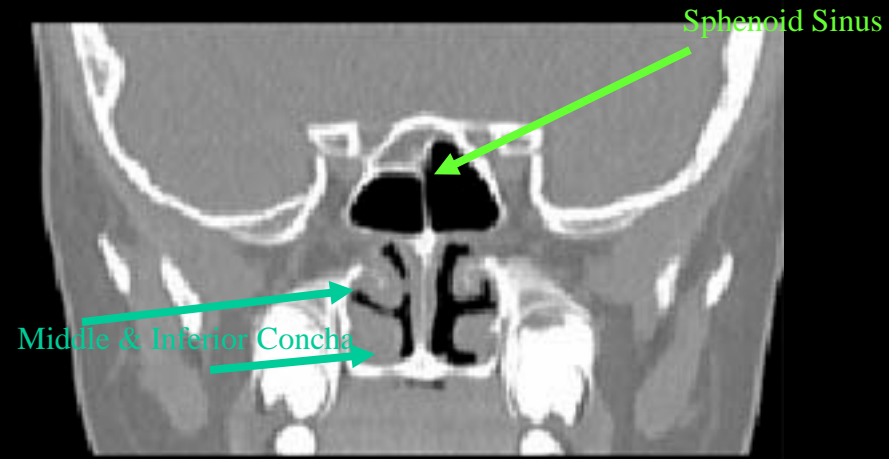
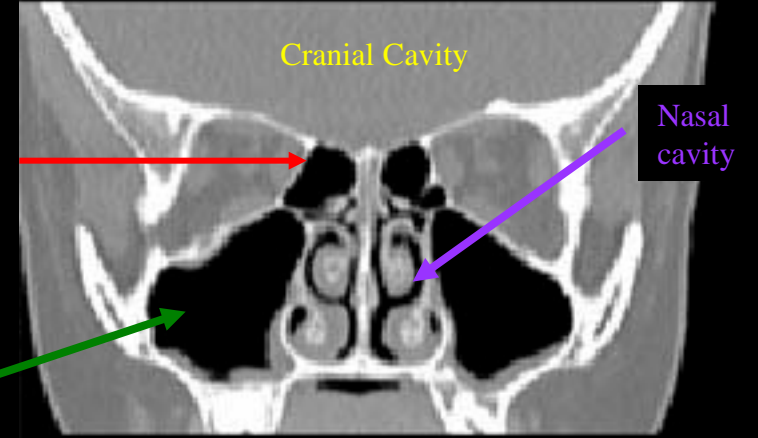
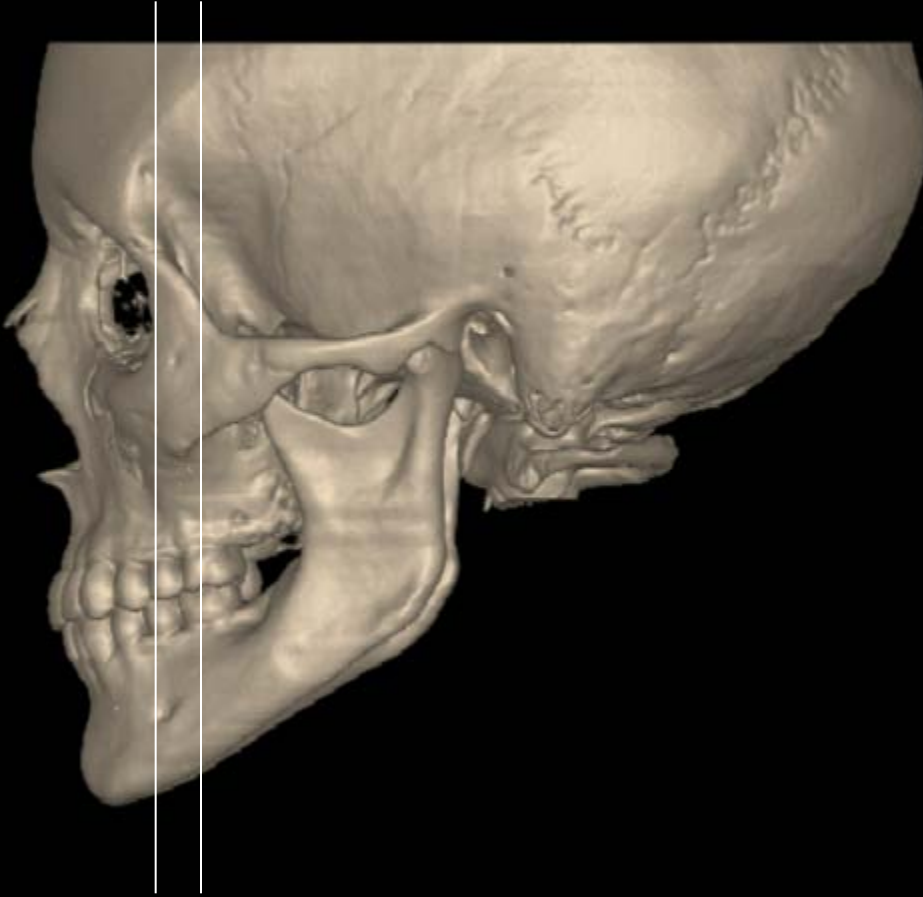
Maxillary sinus



Sphenoid Sinus

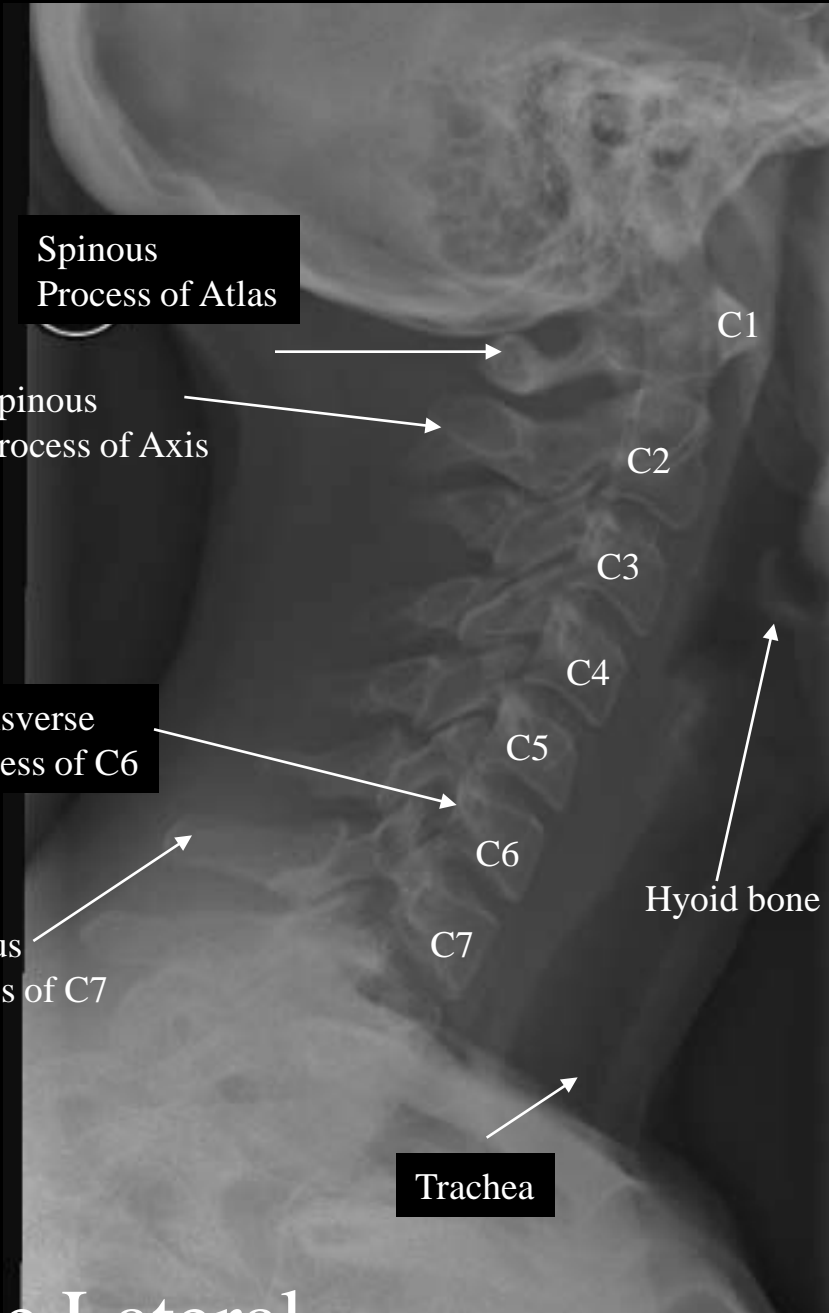
Middle & Inferior Concha

# CT Sinuses Coronal 3D

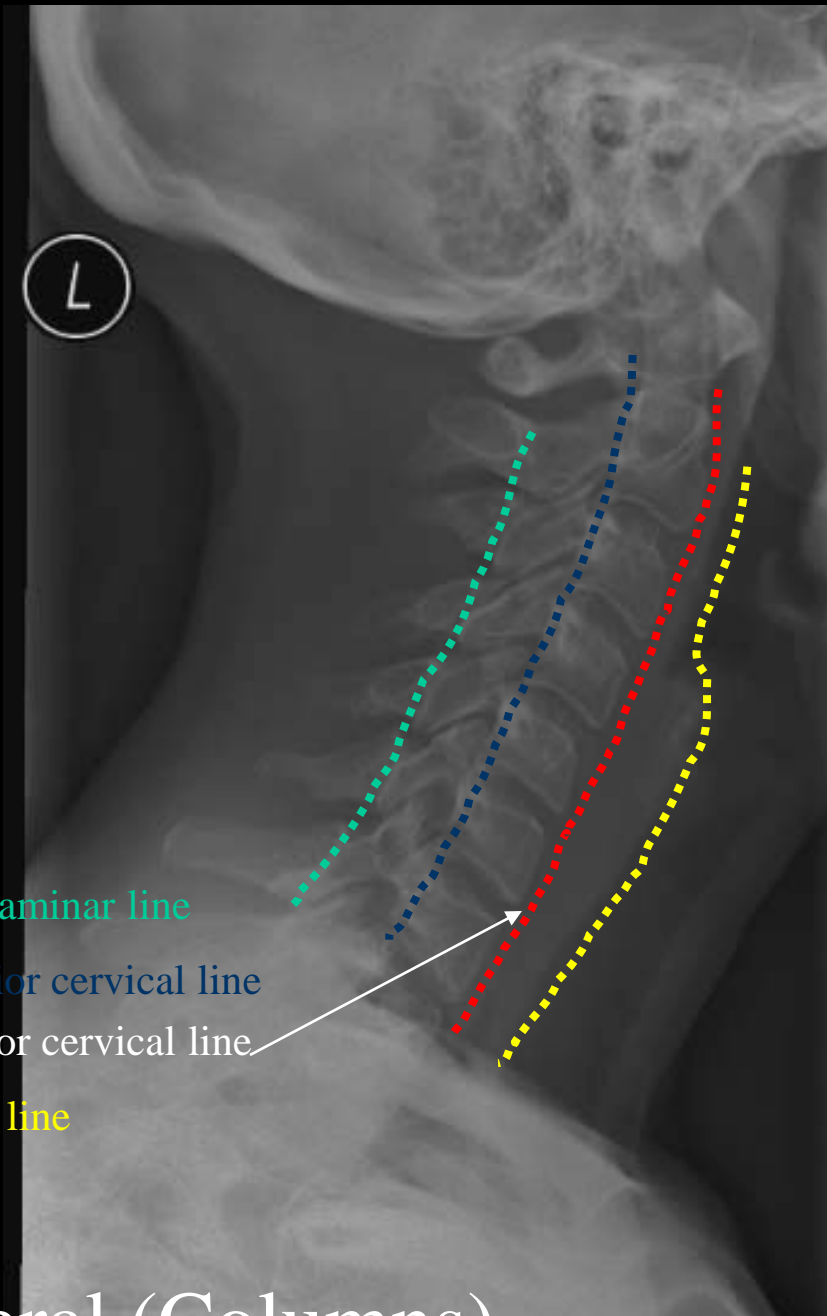


# Cervical Spine





Cervical Spine Lateral



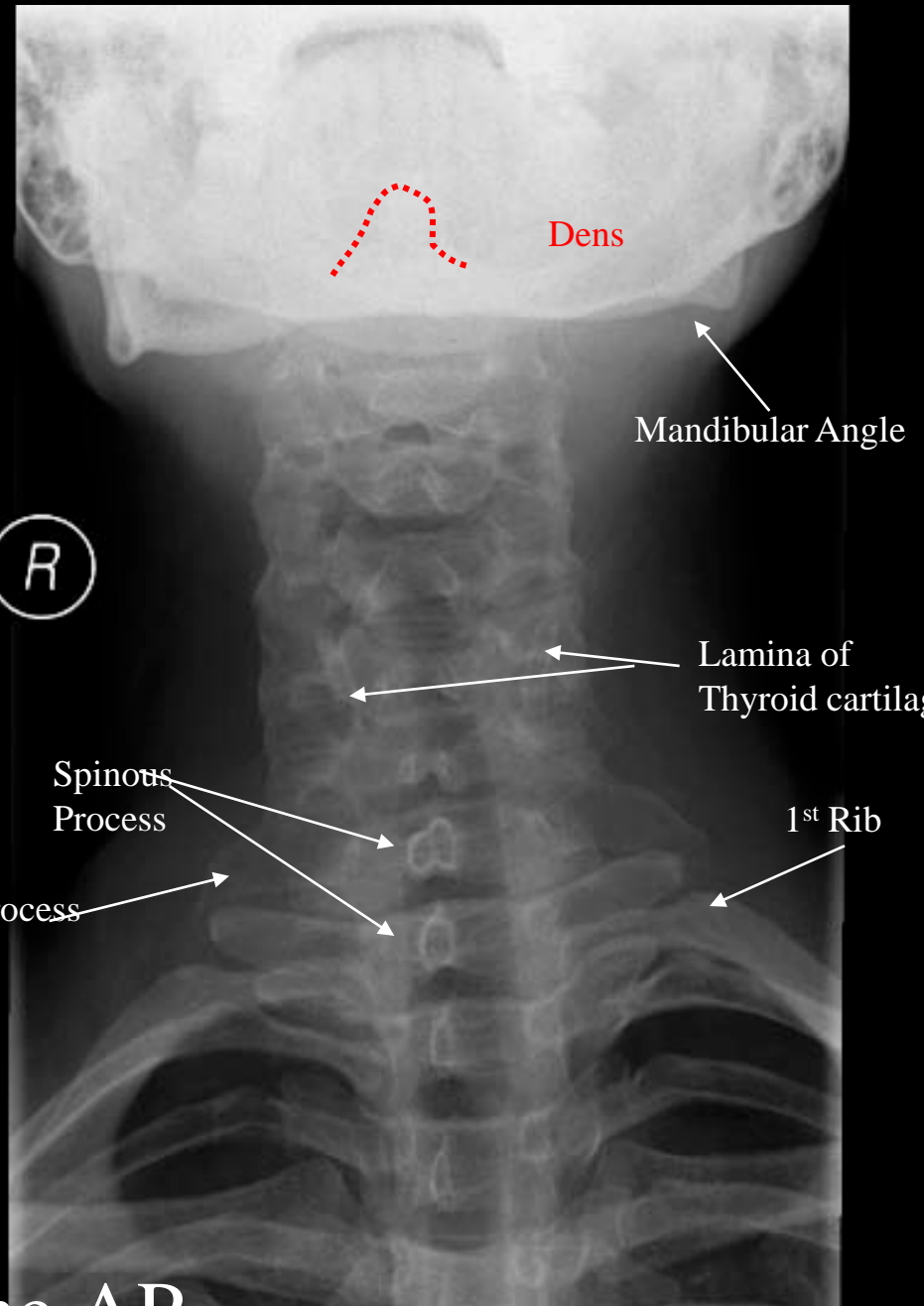
Spinolaminar line

Posterior cervical line

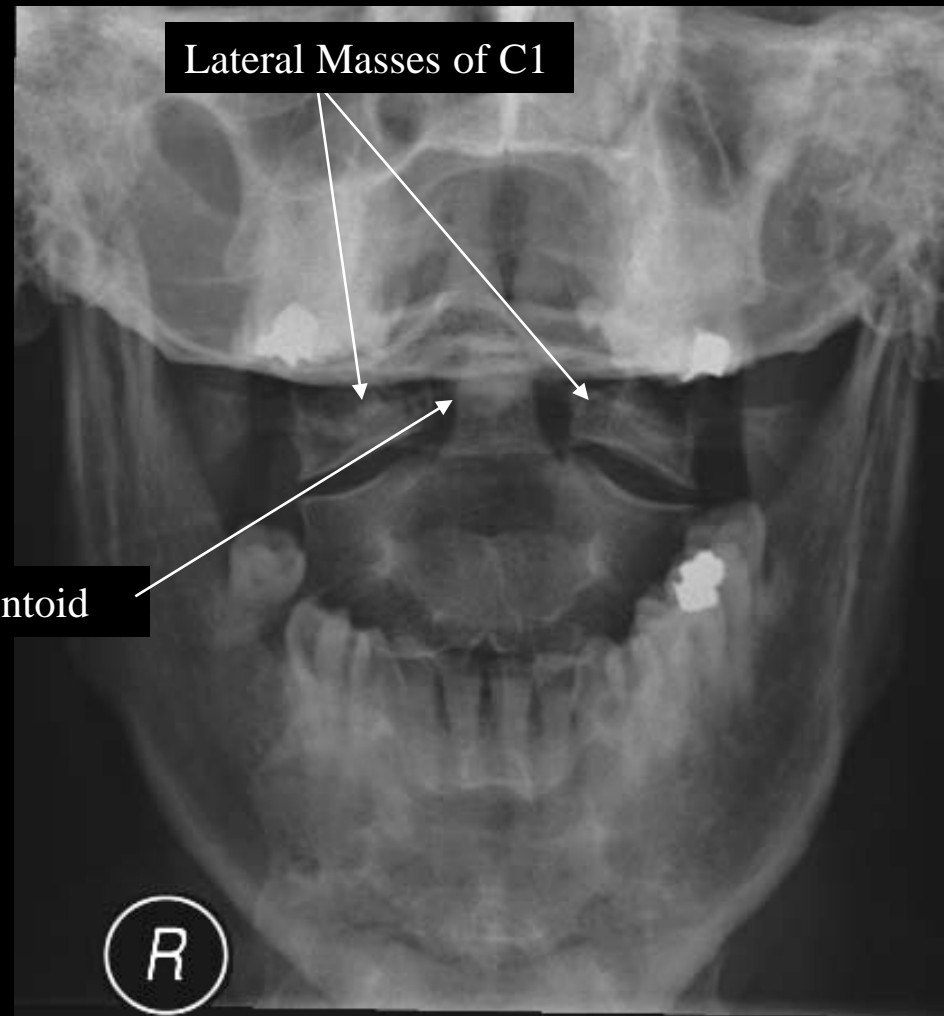
Anterior cervical line

Tissue line

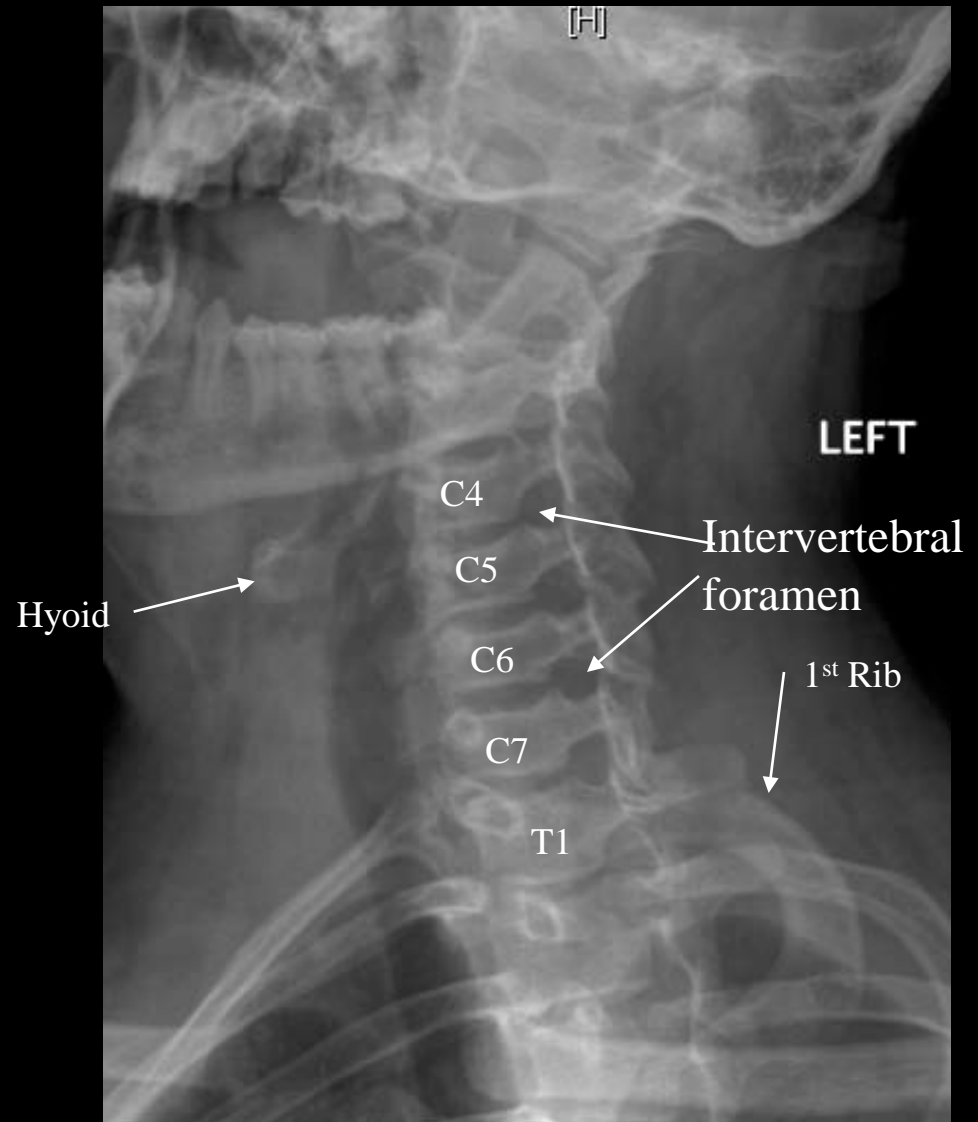
Cervical Spine Lateral (Columns)



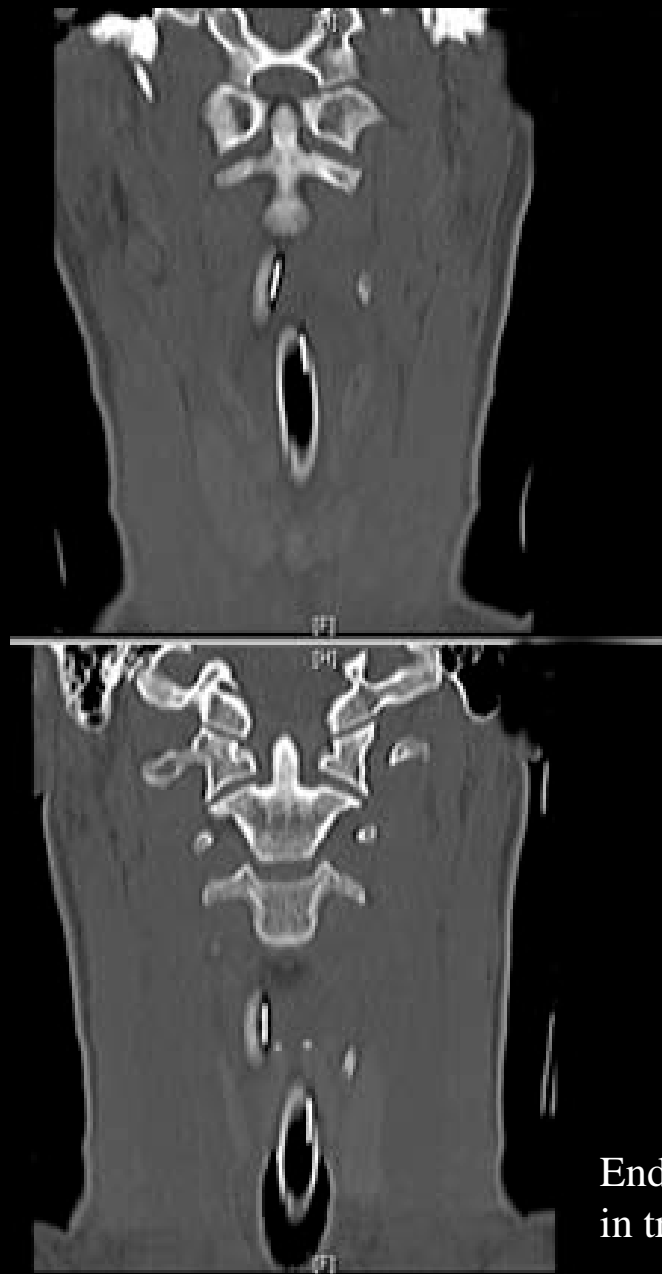
C-Spine AP



Odontoid View



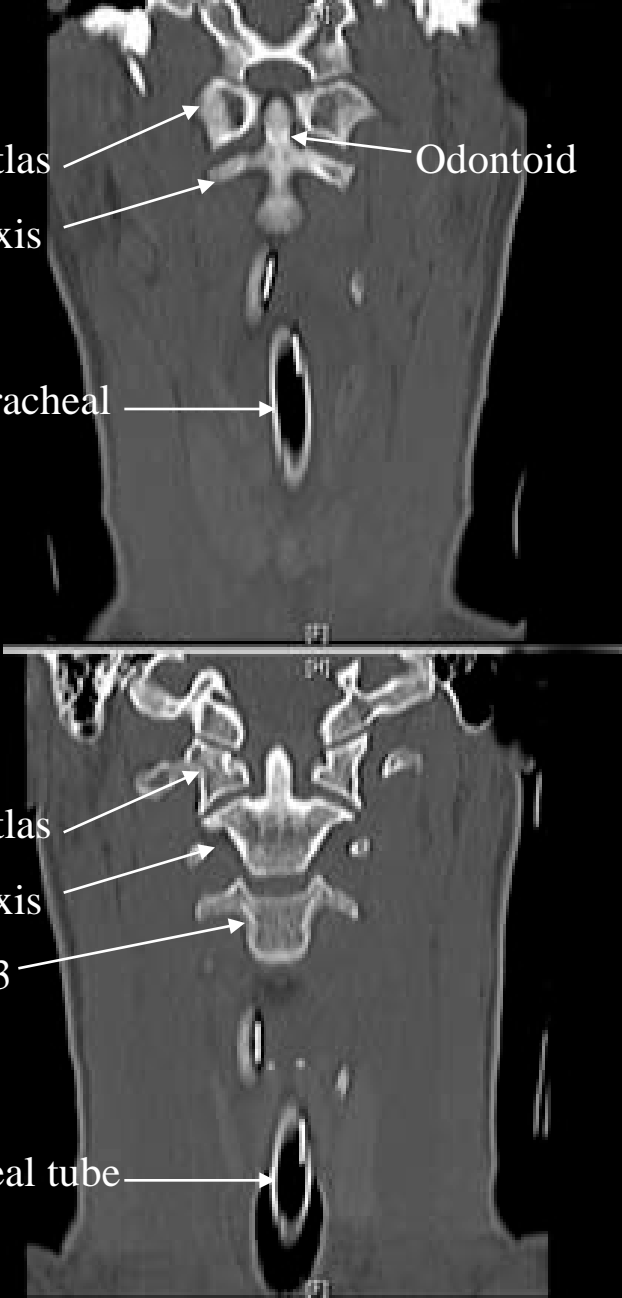
Cervical Vertebrae Lateral



Atlas  
Axis

Odontoid

Endotracheal tube

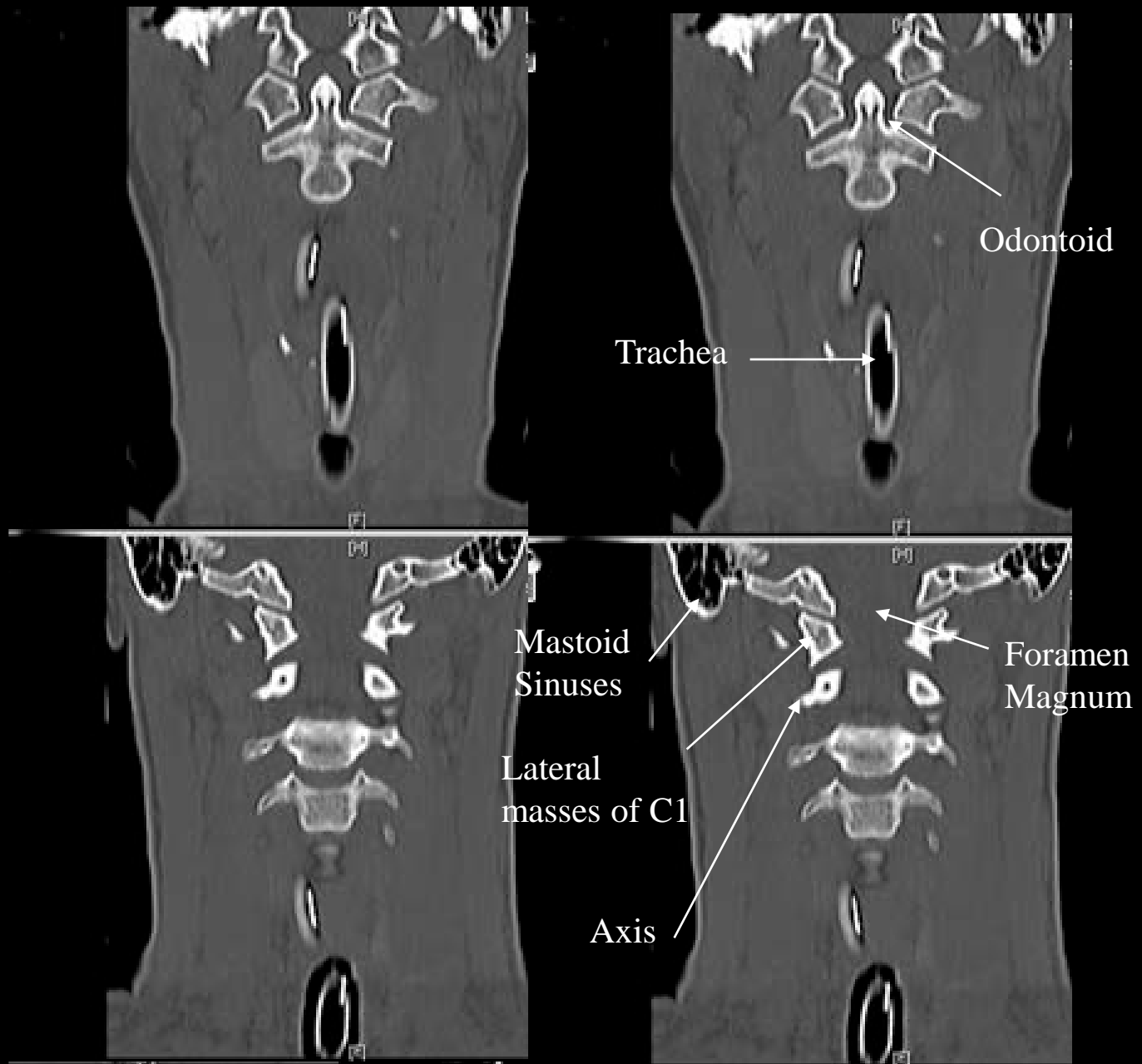


Atlas  
Axis  
C3

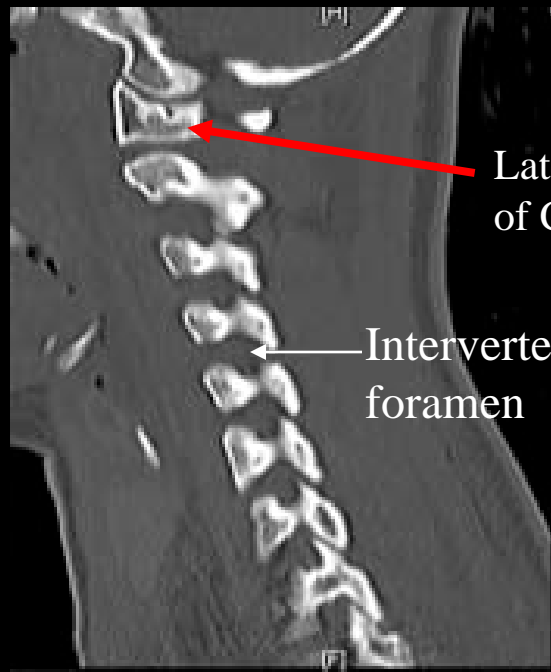
Endotracheal tube  
in trachea

# CT Odontoid





CT Odontoid



Lateral mass  
of C1

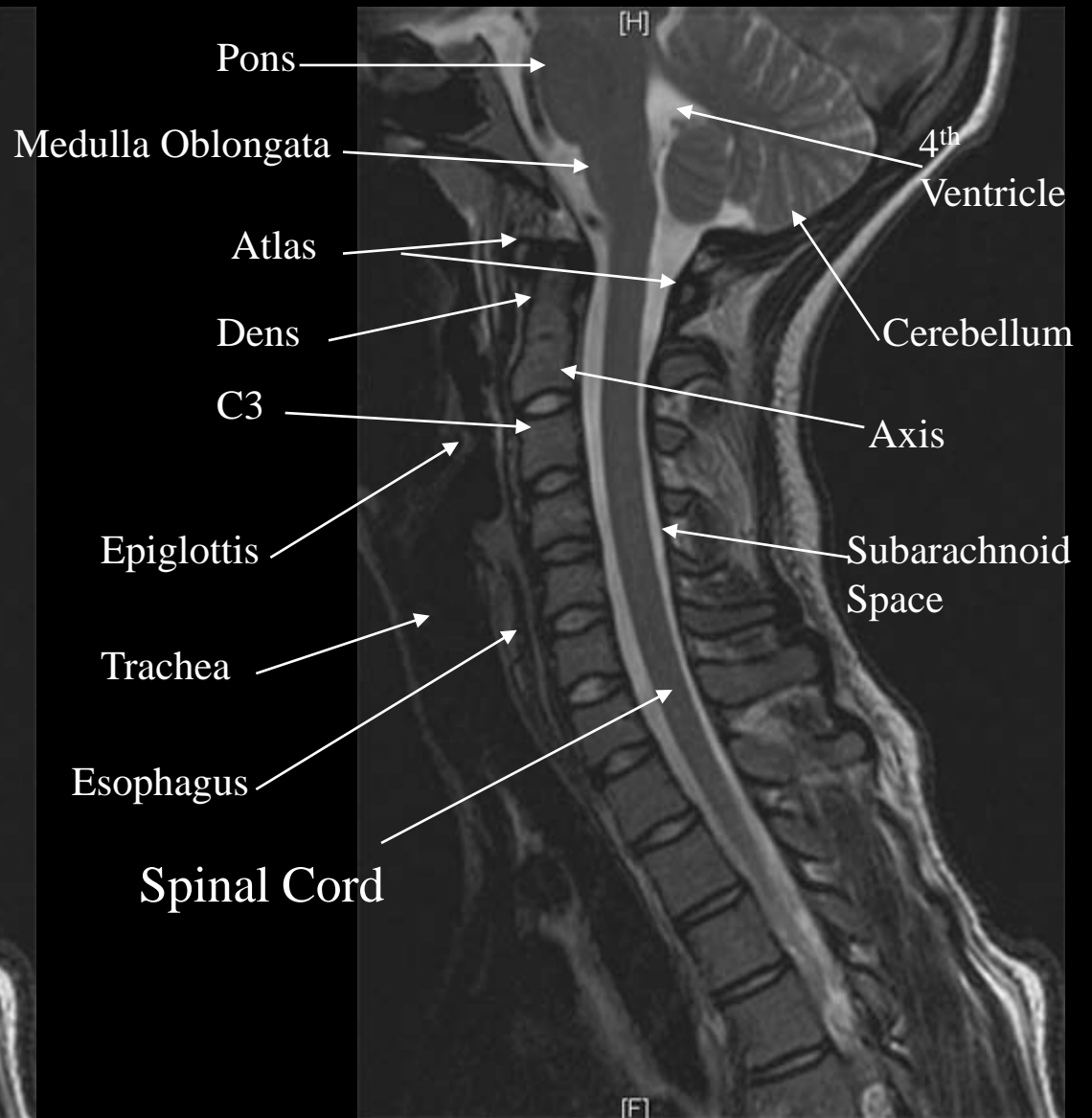
Intervertebral  
foramen



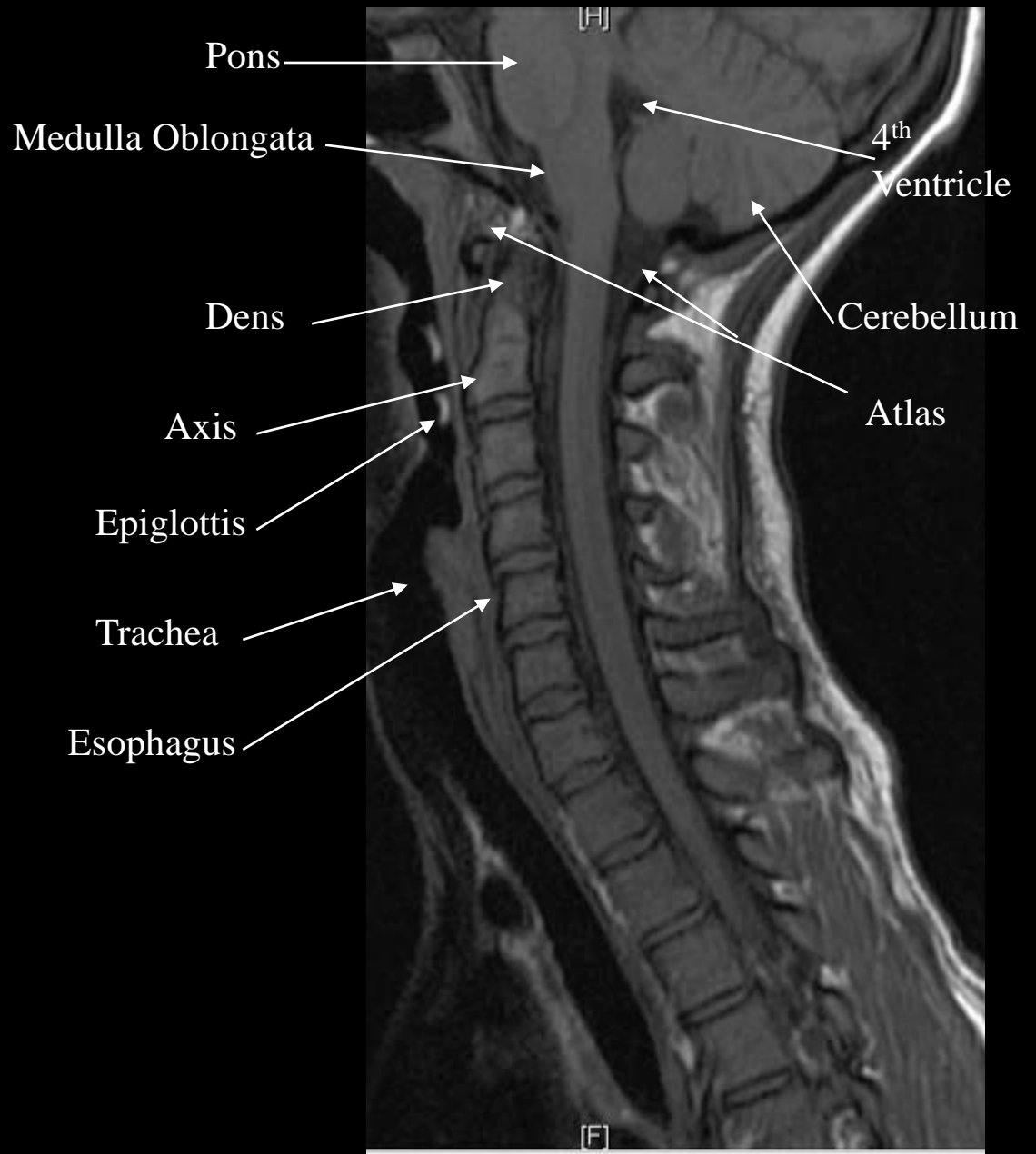
Anterior &  
posterior  
arches of C1



C-Spine CT  
Sagittal



C-Spine MRI T2 Sagittal



C-Spine MRI T1 Sagittal

# Aortic Arch and Branches

Right vertebral artery



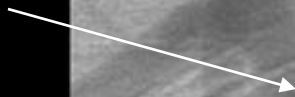
Left vertebral artery



Right common carotid



Right subclavian artery



Left subclavian artery



Right brachiocephalic artery

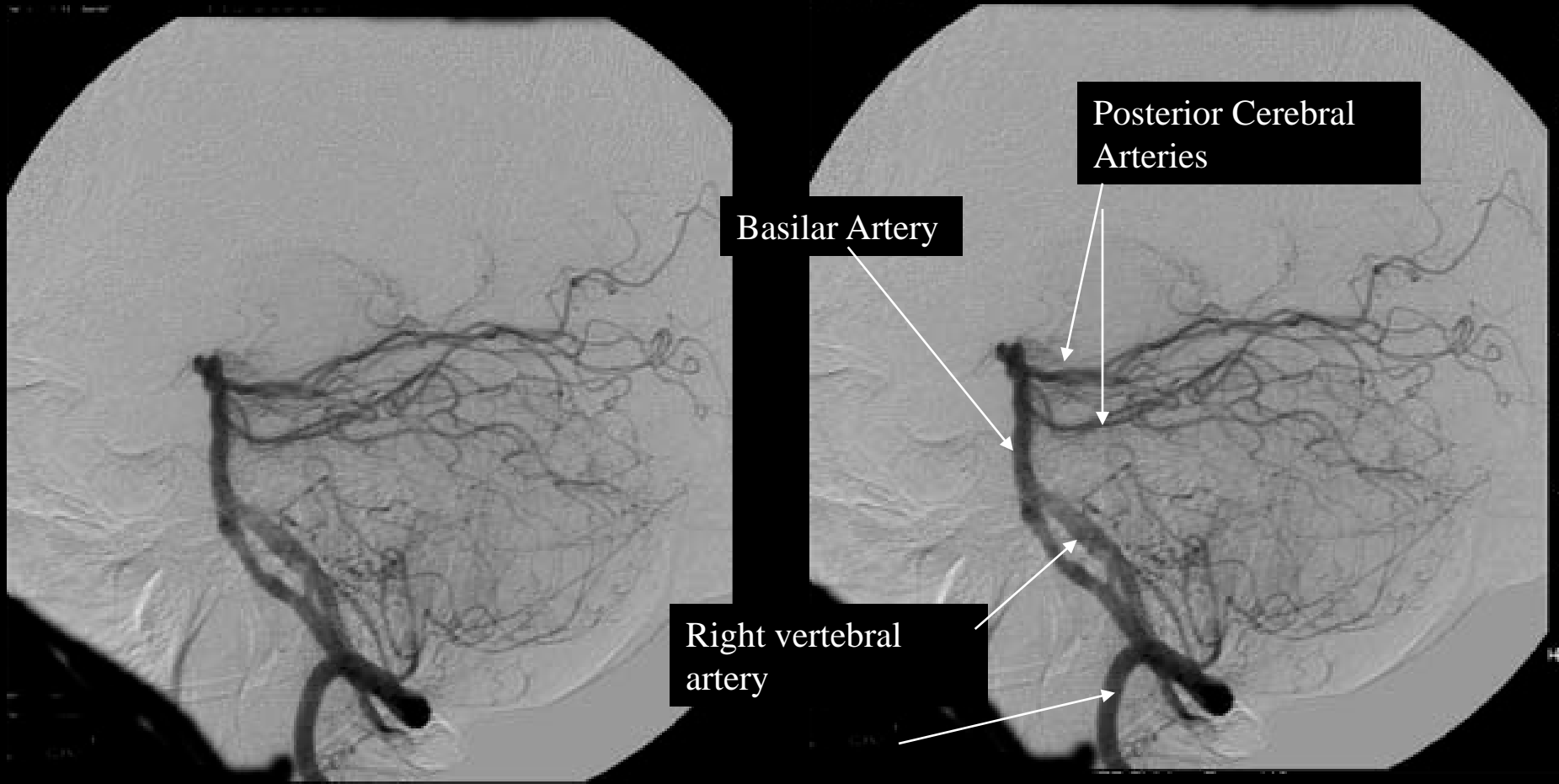


Left common carotid



Aortic Arch





Right vertebral  
artery

Left vertebral  
artery

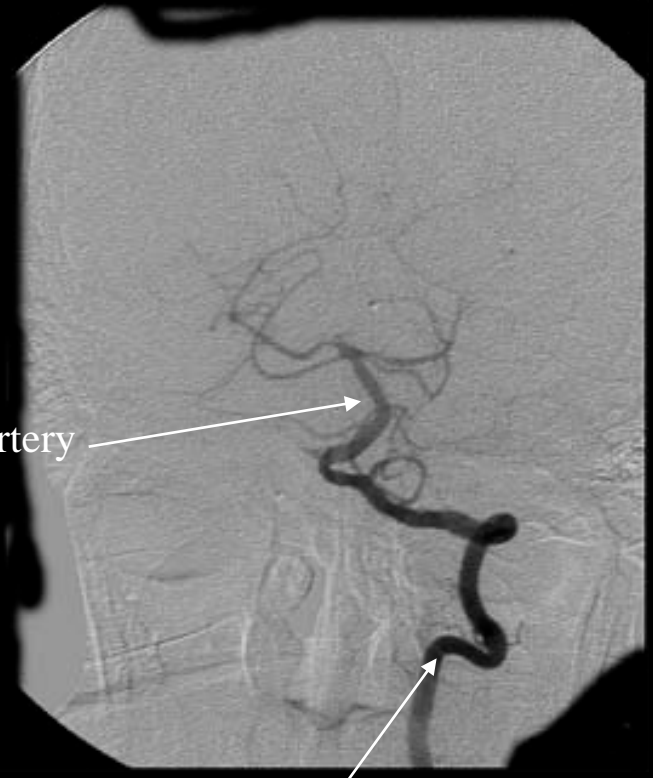
Posterior Cerebral  
Arteries

Basilar Artery

# Vertebral Angiogram Lateral



Basilar Artery

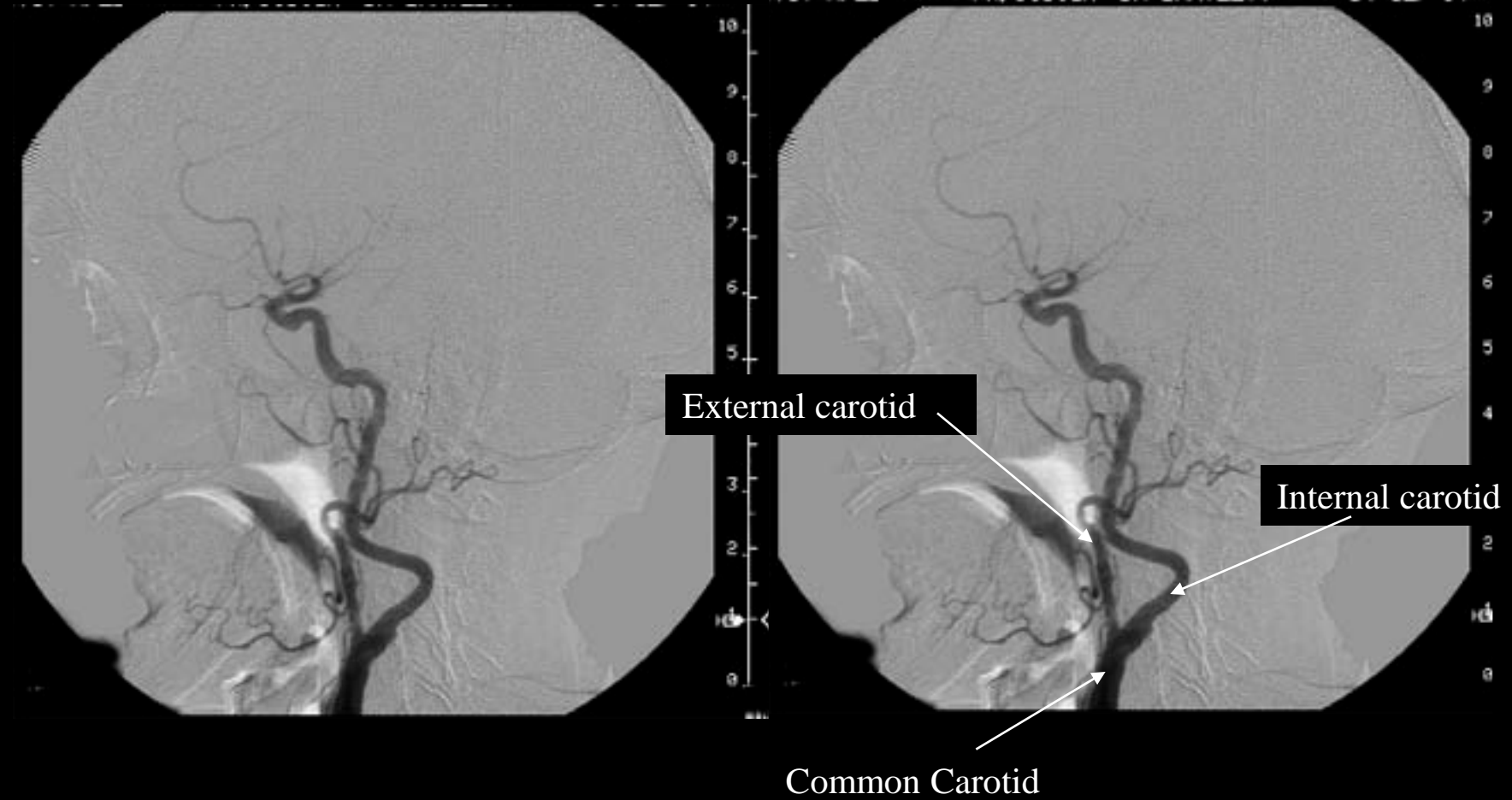


Left vertebral artery

Vertebral Angiogram AP (Vertebral Artery)

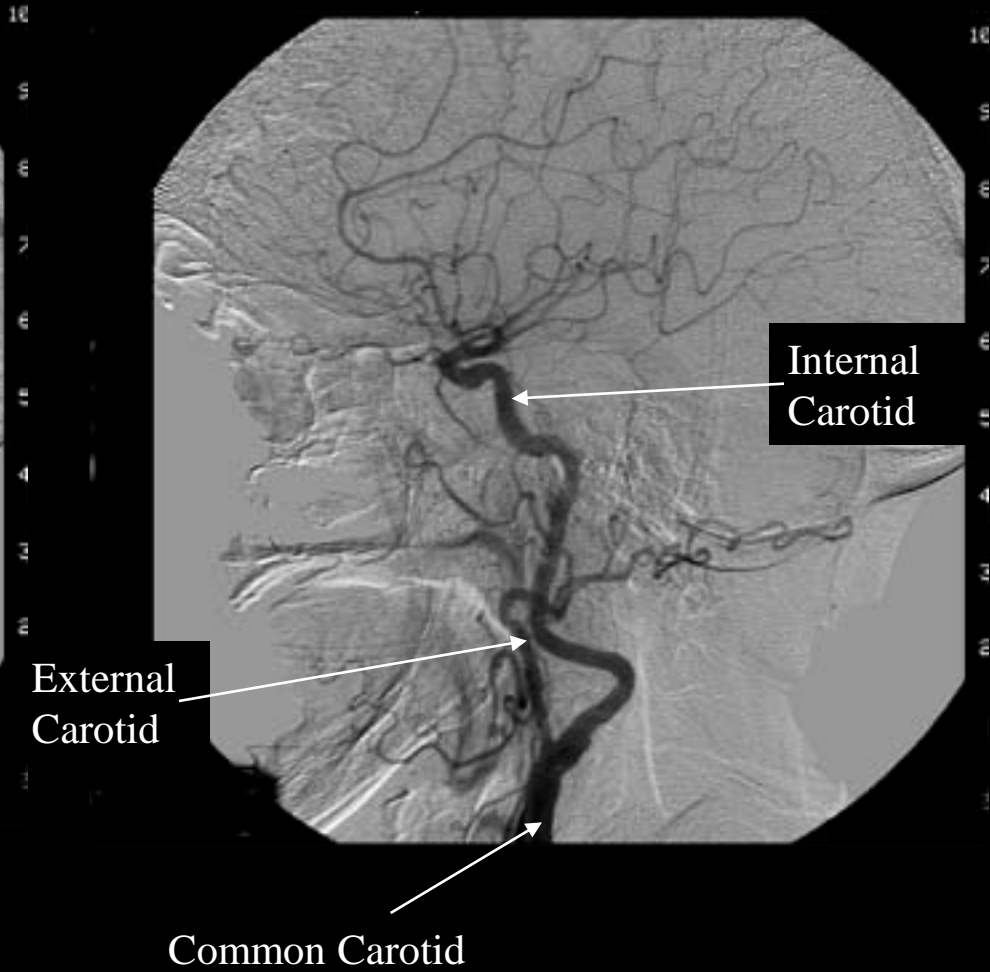


# Carotid Branches

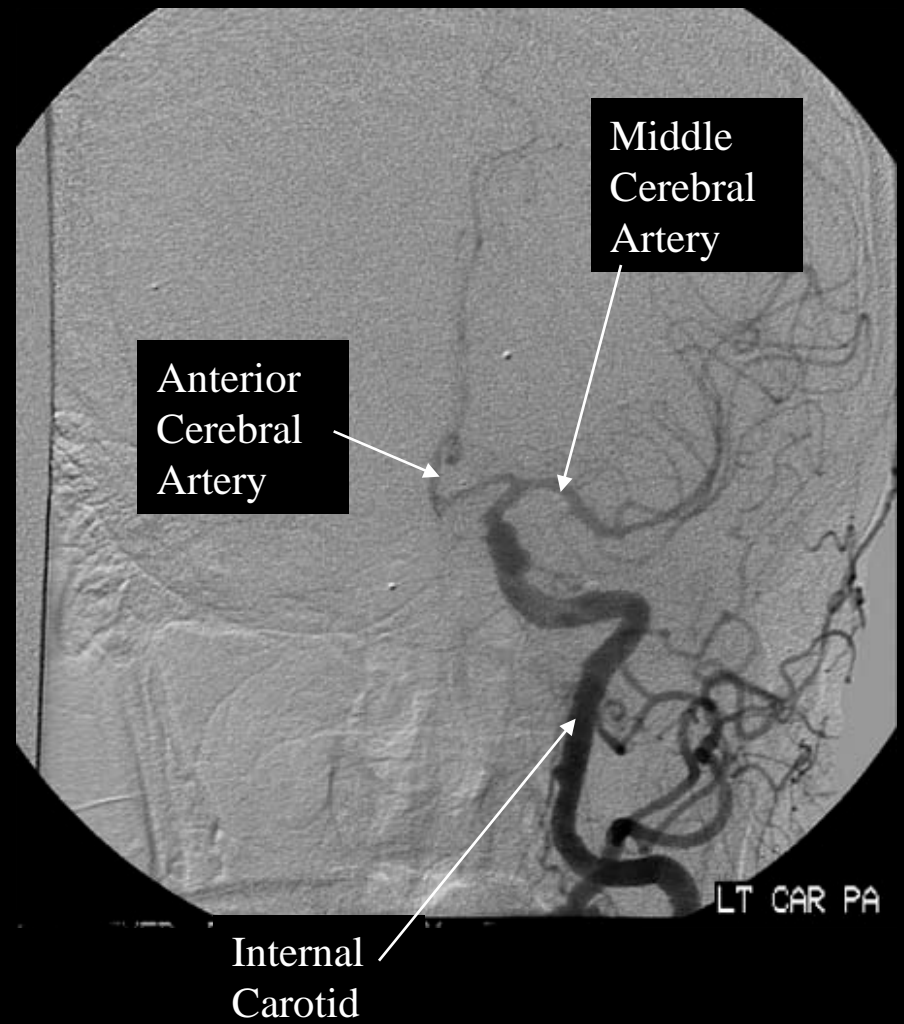


Lateral View

# Carotids (Common, Internal, External Carotids)



Lateral View



## Internal Carotid Branches